



Handling technology

Gripper series GEP2000

THE KNOW-HOW FACTORY

THE KNOW-HOW FACTORY

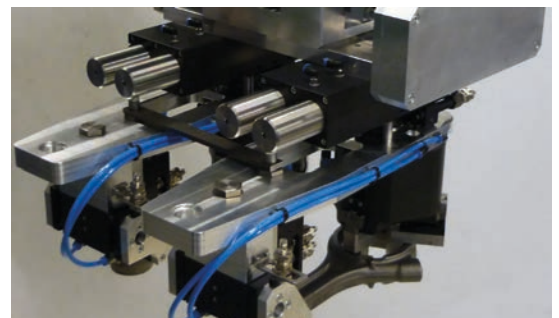
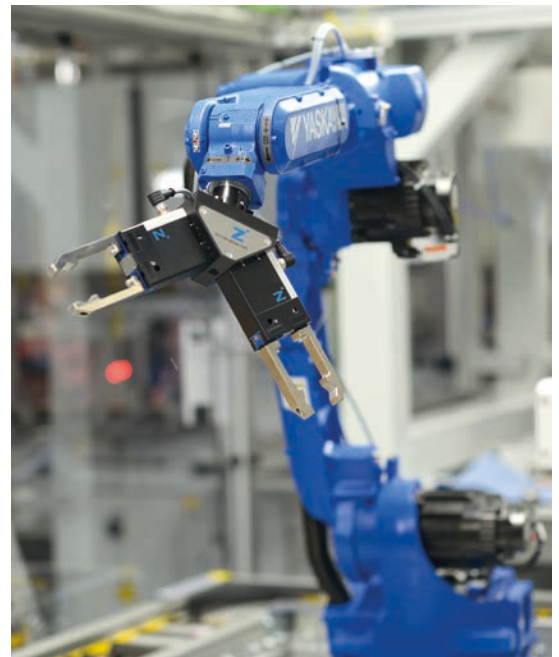
ZIMMER GROUP COMMITTED TO OUR CUSTOMERS

WE HAVE SUCCEEDED FOR YEARS BY OFFERING OUR CUSTOMERS INNOVATIVE AND INDIVIDUALIZED SOLUTIONS. ZIMMER HAS GROWN CONTINUOUSLY AND TODAY WE HAVE REACHED A NEW MILESTONE: THE ESTABLISHMENT OF THE KNOW-HOW FACTORY. IS THERE A SECRET TO OUR SUCCESS?

Foundation. Excellent products and services have always been the foundation of our company's growth. Zimmer is a source of ingenious solutions and important technical innovations. This is why customers with high expectations for technology frequently find their way to us. When things get tricky, Zimmer Group is in its best form.

Style. We have an interdisciplinary approach to everything we do, resulting in refined process solutions in six technology fields. This applies not just to development but to production. Zimmer Group serves all industries and stands ready to resolve even the most unique and highly individualized problems. Worldwide.

Motivation. Customer orientation is perhaps the most important factor of our success. We are a service provider in the complete sense of the word. With Zimmer Group, our customers have a single, centralized contact for all of their needs. We approach each customer's situation with a high level of competence and a broad range of possible solutions.



TECHNOLOGIES



HANDLING TECHNOLOGY

MORE THAN 30 YEARS OF EXPERIENCE AND INDUSTRY KNOWLEDGE: OUR PNEUMATIC, HYDRAULIC AND ELECTRICAL HANDLING COMPONENTS AND SYSTEMS ARE GLOBAL LEADERS.

Components. More than 2,000 standardized grippers, swivel units, robotic accessories and much more. We offer a complete selection of technologically superior products that are ready for rapid delivery.

Semi-standard. Our modular approach to design enables custom configurations and high rates of innovation for process automation.



DAMPING TECHNOLOGY

INDUSTRIAL DAMPING TECHNOLOGY AND SOFT CLOSE PRODUCTS EXEMPLIFY THE INNOVATION AND PIONEERING SPIRIT OF THE KNOW-HOW FACTORY.

Industrial damping technology.

Whether standard or customized solutions, our products stand for the highest cycle rates and maximum energy absorption with minimal space requirements.

Soft Close. Development and mass production of pneumatic and fluid dampers with extraordinary quality and rapid delivery.

OEM and direct. Whether they need components, returning mechanisms or complete production lines – we are the trusted partner of many prestigious customers.



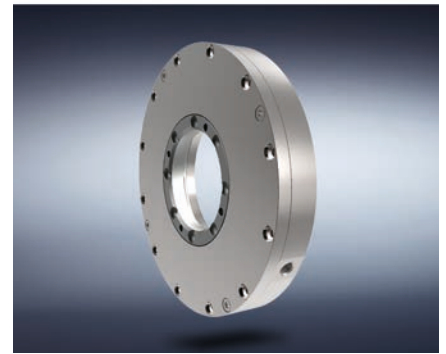
LINEAR TECHNOLOGY

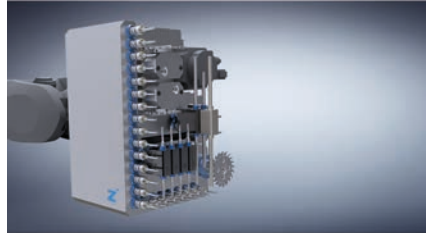
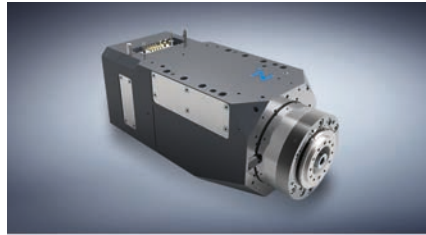
WE DEVELOP LINEAR COMPONENTS AND SYSTEMS THAT ARE INDIVIDUALLY ADAPTED TO OUR CUSTOMERS' NEEDS.

Clamping and braking elements.

We offer you more than 4,000 types for profiled and round rails as well as for a variety of guide systems from all manufacturers. It makes no difference whether you prefer manual, pneumatic, electric or hydraulic drive.

Flexibility. Our clamping and braking elements ensure that movable components such as Z-axes or machining tables maintain a fixed position and that machines and systems come to a stop as quickly as possible in an emergency.





PROCESS TECHNOLOGY

MAXIMUM EFFICIENCY IS ESSENTIAL FOR SYSTEMS AND COMPONENTS USED IN PROCESS TECHNOLOGY. HIGH-LEVEL CUSTOM SOLUTIONS ARE OUR TRADEMARK.

A rich reservoir of experience. Our know-how ranges from the development of materials, processes and tools through product design to production of series products.

Deep production capabilities. The Zimmer Group pairs these capabilities with flexibility, quality and precision, even when making custom products.

Series production. We manufacture demanding products out of metal (MIM), elastomers and plastics with flexibility and speed.

MACHINE TECHNOLOGY

ZIMMER GROUP DEVELOPS INNOVATIVE METAL, WOOD AND COMPOSITE MATERIAL PROCESSING TOOL SYSTEMS FOR ALL INDUSTRIES. NUMEROUS CUSTOMERS CHOOSE US AS THEIR SYSTEMS AND INNOVATION PARTNER.

Knowledge and experience. Industry knowledge and a decades-long development partnership in exchangeable assemblies, tool interfaces and systems make us bound for new challenges around the world.

Components. We deliver numerous standard components from stock and develop innovative, customized systems for OEM and end customers – far beyond the metal and wood processing industries.

Variety. Whether you have machining centers, lathes or flexible production cells, the power tools, holders, assemblies and drilling heads of Zimmer Group are ready for action.

SYSTEM TECHNOLOGY

ZIMMER GROUP IS ONE OF THE LEADING SPECIALISTS IN THE DEVELOPMENT OF CUSTOMIZED SYSTEM SOLUTIONS WORLDWIDE.

Customized. A team made up of more than 20 experienced designers and project engineers develop and produce customized solutions for special tasks in close collaboration with end customers and system integrators. It doesn't matter if it is a simple gripper and handling solution or a complex system solution.

Solutions. These system solutions are used in many industries, from mechanical engineering to the automotive and supplier industries to plastics engineering and consumer goods industries, all the way to foundries. The Know-how Factory helps countless companies to thrive competitively by increasing automation efficiency.

ELECTRIC GRIPPERS

OVERVIEW OF SERIES



Series	GEP9000	GEP2000		
Number of installation sizes	● ●	● ● ●		
Stroke per jaw [mm]	█ 2 - 4	█ 10 - 16		
Gripping force [N]	█ 11 - 50	█ 50 500		
Voltage [V]	24	24		
Current consumption max. [A]	5	2		
Weight [kg]	0.25 - 0.57	0.31 - 0.9		
		IL-00	IO-00	IO-05
Control	Digital I/O	⊗ IO-Link	Digital I/O	Digital I/O
Equipment features				
Positionable				
Integrated sensing	●	●		●
Gripping force adjustable		●	●	●
Corrosion resistance				
Purged air				
IP class	40	40	40	40
Options				
Magnetic field sensor			●	
Safety characteristics				
Spring closing C	●			
Spring opening O	●			
Self locking mechanism		●	●	●
Maintenance				
Maintenance-free cycles (max.)	30 million	10 million	10 million	10 million



GEP5000

GED5000

GEH6000IL

● ● ●	● ● ●	● ● ●
6 - 10	6 - 10	0 80
540 1900	540 1900	60 2400
24	24	24
5	5	7.5
0.79 - 1.66	1.09 - 2.33	0.76 - 2.6

IO-Link / Digital I/O	IO-Link / Digital I/O	IO-Link
		●
●	●	●
●	●	●
●	●	
●	●	
64	64	54
●	●	●
30 million	30 million	5 million

2-JAW PARALLEL GRIPPERS

SERIES GEP2000

▶ PRODUCT ADVANTAGES



“The electric compact one”

▶ Largest stroke in small installation space

Do you require a large stroke, due to the fact that you are operating either a form fit gripper or a large range of parts but the installation space and the load capacity of your application is limited? Then this gripper is perfect for you!

▶ Adjustable gripping force

Using pressures that are too high can damage your workpieces! You can optimally adjust the gripping force to your workpiece by means of the integrated potentiometer or over the control system via IO-Link.

▶ The simplest activation

It is your choice whether you want to control the gripper by means of I/O ports—like a valve—or if you prefer the version with IO-Link. Both have this in common: they are easy to integrate into your control system.

▶ THE BEST PRODUCT FOR YOUR APPLICATION



▶ Our products welcome the challenge!

Extreme conditions, all over the world—our tried and tested components and systems give you endless possibilities.

Find the best product for your specific use:

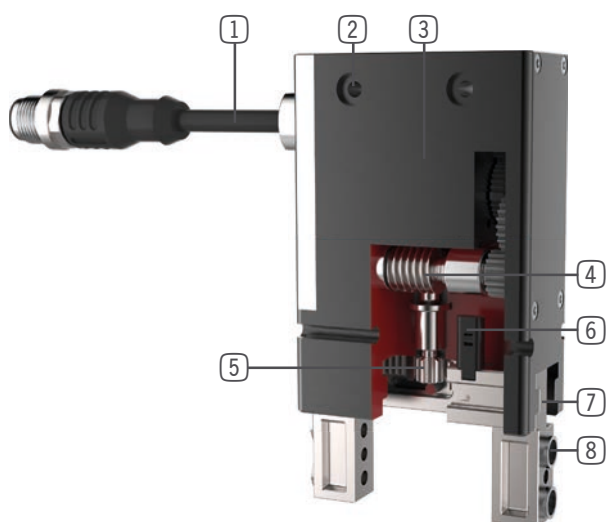
www.zimmer-group.de

HOW TO ORDER CORRECTLY

▶ The product order numbers are arranged according to this diagram:

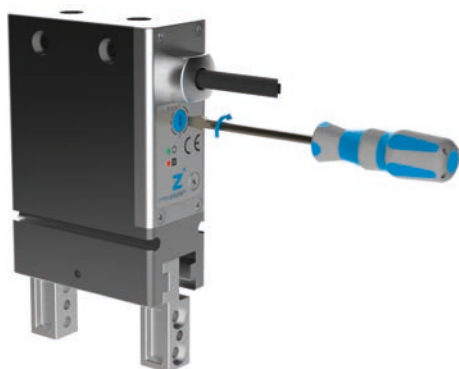
Order no.	GEP2013	<input type="checkbox"/>	<input type="checkbox"/>	-A
IO-Link control		IL	00	
Digital control		IO	00	
Digital control + integrated analog query		IO	05	

► BENEFITS IN DETAIL



- ① **Control**
- Via I/O ports (IO) or via IO-Link (IL)
- ② **Mounting and positioning**
- mounting possible from several sides for versatile positioning
- ③ **BLDC motor**
- Wear-resistant brushless DC motor
- ④ **Helical worm gear**
- self locking mechanism in case of power drop
- ⑤ **Synchronization**
- via rack and pinion
- ⑥ **Position sensing**
- Permanent magnet for direct query of jaw movement via magnetic field sensors
- ⑦ **Gripper jaw**
- individual gripper finger mounting
- ⑧ **Removable centering sleeves**
- quick and economical positioning of the gripper fingers

► SERIES CHARACTERISTICS



Adjustable gripping force

- Four-level gripping force adjustment via rotary switch for digital gripper control
- For the IO-Link variant, gripping force can be conveniently adjusted using the control system

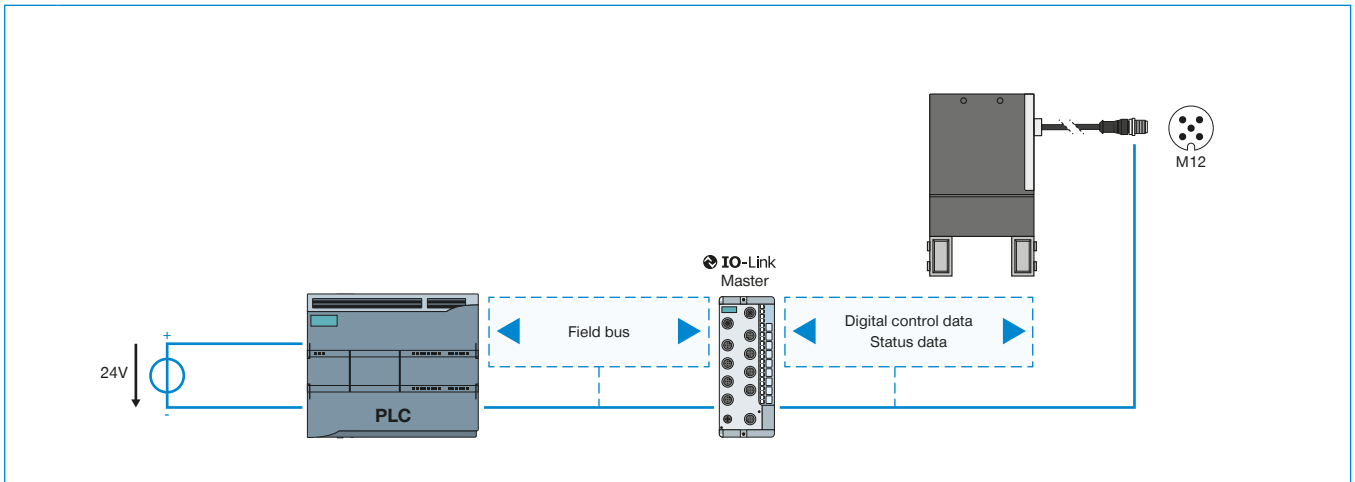
Operating safety

- Mechanical self-locking mechanism, which means that in the event of a power failure, the workpiece is held securely
- Gripper can be mechanically opened by means of an Allen key

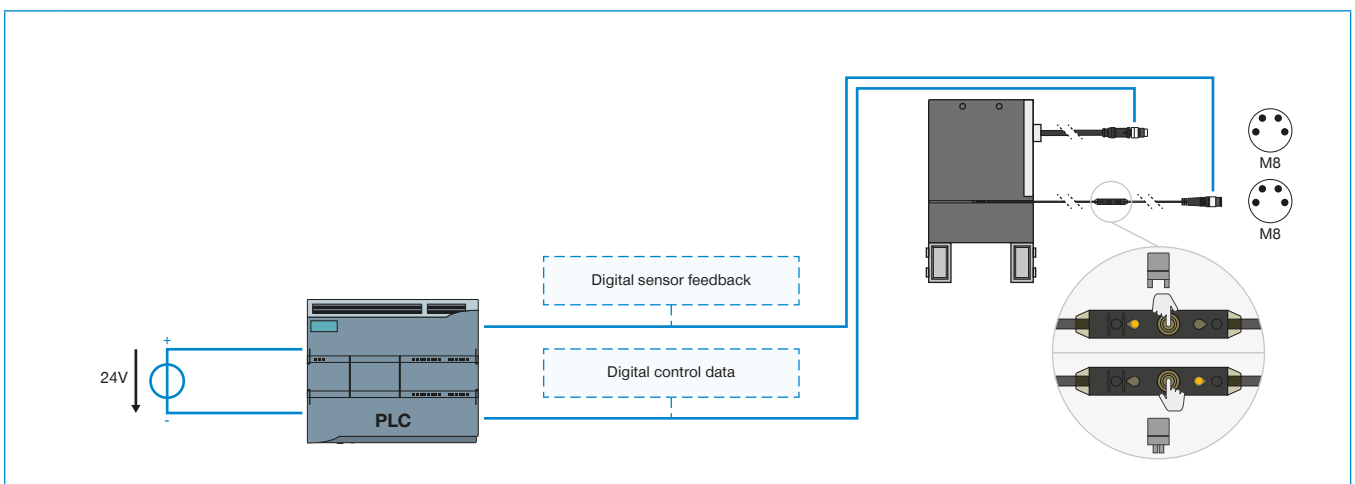
CONTROL

GEP2000 SERIES

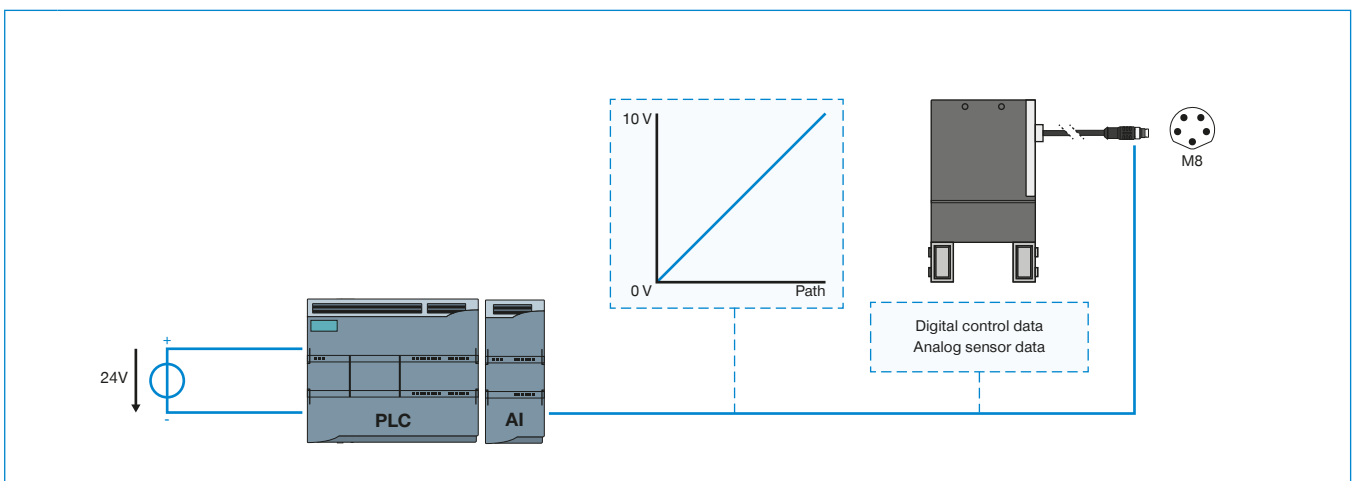
1 ► IO-LINK CONTROL — GEP2000IL-00-A



2 ► DIGITAL CONTROL — GEP2000IO-00-A



3 ► DIGITAL CONTROL + INTEGRATED ANALOG SENSING — GEP2000IO-05-A



1 ▶ IO-LINK CONTROL — GEP2000IL-00-A

- ▶ Single-cable solution—control system data, status/sensor data and power supply over a single cable
- ▶ Bi-directional data transmission
- ▶ Gripping force and gripping speed can be configured using software
- ▶ 32 workpieces data sets can be programmed
- ▶ Parts detection in range of +/- 0.05 mm with freely teachable area
- ▶ Status data such as temperature and cycle number can be read out
- ▶ Can be integrated into ZIMMER HMI

2 ▶ DIGITAL CONTROL — GEP2000IO-00-A

- ▶ Single-cable solution—control system data and power supply over a single cable
- ▶ Gripper commissioning by means of digital signals
- ▶ Optional digital gripper position feedback via external sensors
- ▶ Gripping force adjustment in four levels to the object being gripped, using rotary switch
- ▶ Can be integrated into ZIMMER HMI

3 ▶ DIGITAL CONTROL + INTEGRATED ANALOG SENSING — GEP2000IO-05-A

- ▶ Single-cable solution—control system data, sensor data and power supply over a single cable
- ▶ Gripper activation by means of digital signals
- ▶ Integrated analog feedback of the gripper position
- ▶ Gripping force adjustment in four levels to the object being gripped, using rotary switch
- ▶ Can be integrated into ZIMMER HMI

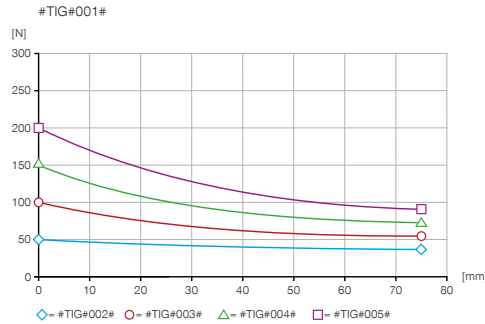
2-JAW PARALLEL GRIPPERS

INSTALLATION SIZE GEP2010

▶ PRODUCT SPECIFICATIONS



▶ Gripping force diagram



▶ Forces and moments

Displays static forces and moments that can also have an effect, besides the gripping force.



Mr [Nm]	7
Mx [Nm]	7
My [Nm]	5.5
Fa [N]	200

▶ TECHNICAL DATA

Order no.	▶ Technical Data		
	GEP2010IL-00-A	GEP2010IO-00-A	GEP2010IO-05-A
Control	IO-Link	I/O	I/O
Integrated position sensing	Using process data	No	Analog 0 to 10 V
Stroke per jaw [mm]	10	10	10
Gripping force safety device	mechanical	mechanical	mechanical
Control time [s]	0.03	0.03	0.03
Permissible weight per jaw max [kg]	0.10	0.10	0.10
Length of the gripper fingers max. [mm]	80	80	80
Repetition accuracy +/- [mm]	0.05	0.05	0.05
Voltage [V]	24	24	24
Current consumption max. [A]	1	1	1
Operating temperature [°C]	+5 ... +60	+5 ... +60	+5 ... +60
Minimum positioning path per jaw [mm]	0.5	0.5	0.5
Protection to IEC 60529	IP40	IP40	IP40
Weight [kg]	0.31	0.31	0.31

▶ TECHNICAL DATA OF THE FORCE LEVELS

Order no.	▶ Level 1		
	GEP2010IL-00-A	GEP2010IO-00-A	GEP2010IO-05-A
Gripping force [N]	50	50	50
Closing time / Opening time [s]	0.3 / 0.3	0.3 / 0.3	0.3 / 0.3

Order no.	▶ Level 2		
	GEP2010IL-00-A	GEP2010IO-00-A	GEP2010IO-05-A
Gripping force [N]	100	100	100
Closing time / Opening time [s]	0.25 / 0.25	0.25 / 0.25	0.25 / 0.25

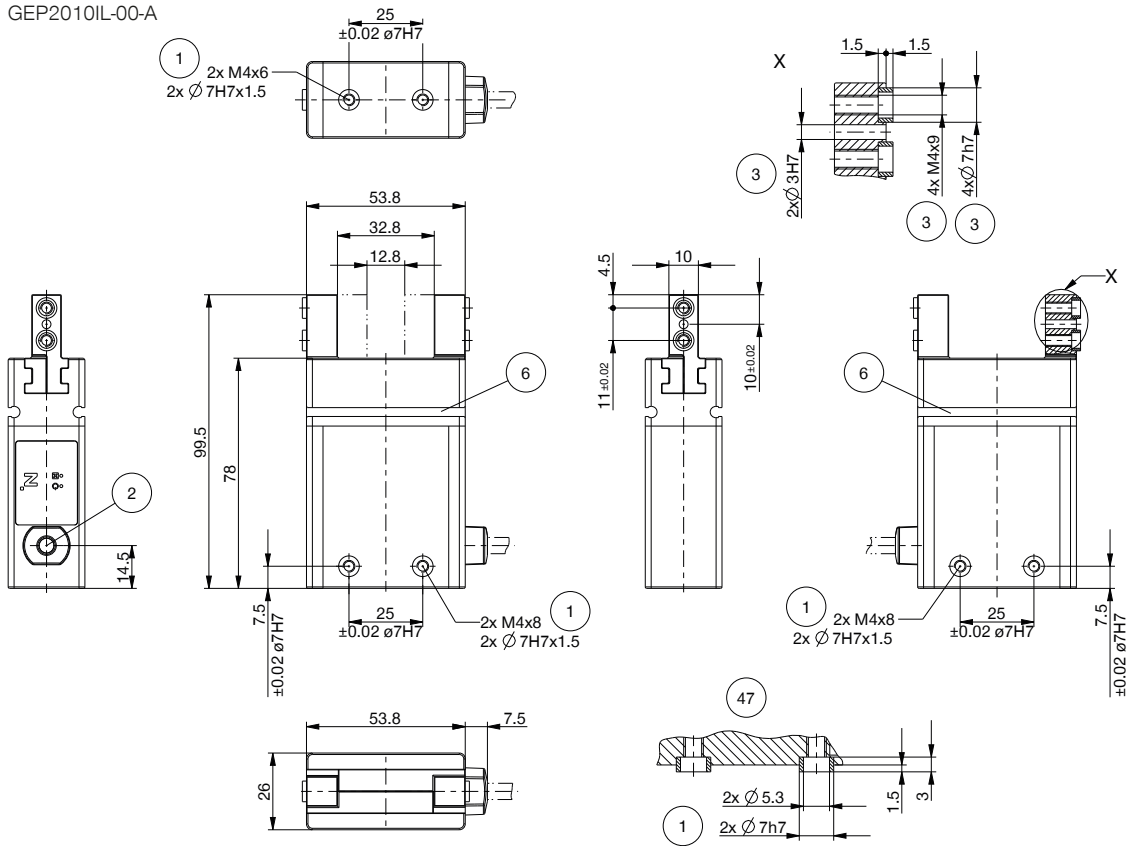
Order no.	▶ Level 3		
	GEP2010IL-00-A	GEP2010IO-00-A	GEP2010IO-05-A
Gripping force [N]	150	150	150
Closing time / Opening time [s]	0.22 / 0.22	0.22 / 0.22	0.22 / 0.22

Order no.	▶ Level 4		
	GEP2010IL-00-A	GEP2010IO-00-A	GEP2010IO-05-A
Gripping force [N]	200	200	200
Closing time / Opening time [s]	0.19 / 0.19	0.19 / 0.19	0.19 / 0.19

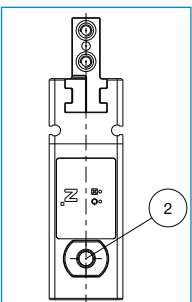
TECHNICAL DRAWINGS

- ① Gripper attachment
- ② Energy supply IO-Link (M12, 5-pole)
- ③ Fixing for gripper finger
- ⑥ Integrated slot for magnetic field sensor
- ④④ Energy supply (M8, 4-pole)
- ④⑤ Energy supply (M8, 5-pole)
- ④⑥ Gripping force setting
- ④⑦ Gripper mounting clamp

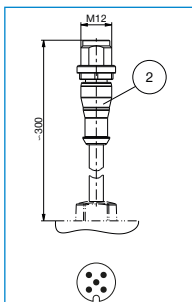
GEP2010IL-00-A



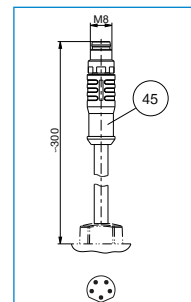
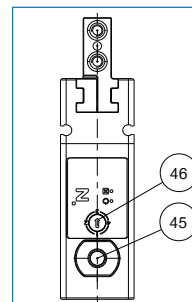
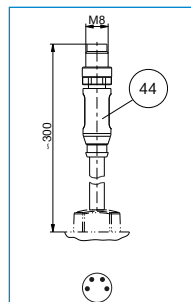
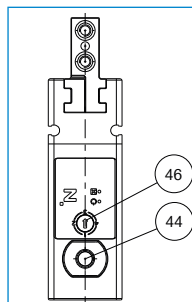
GEP2010IL-00-A



GEP2010IO-00-A

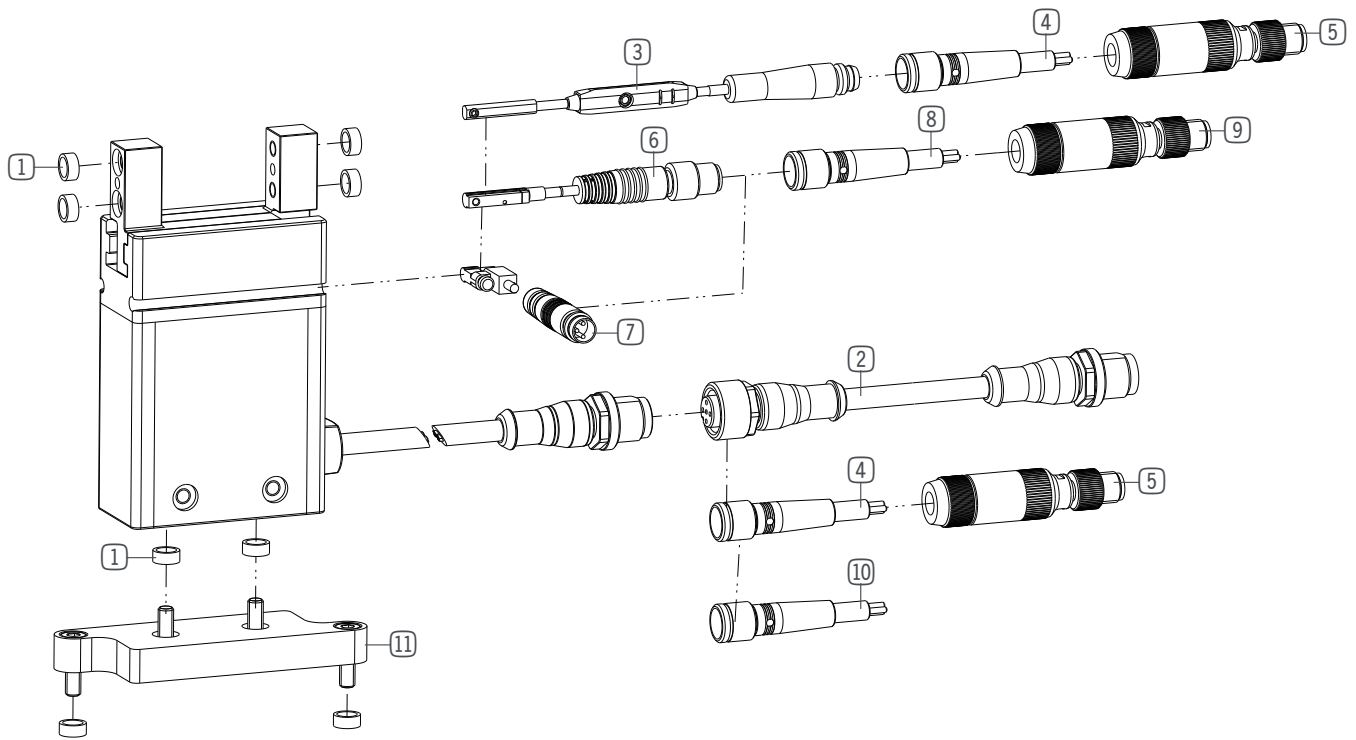


GEP2010IO-05-A



2-JAW PARALLEL GRIPPERS

INSTALLATION SIZE GEP2010



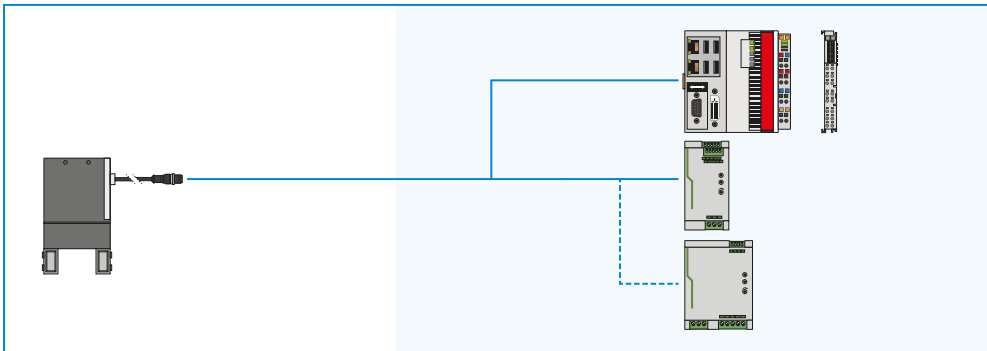
▶ INCLUDED IN DELIVERY



Centering Disc

390677

▶ YOU CAN FIND CONFIGURATION EXAMPLES ON PAGE 24 / 25



► **RECOMMENDED ACCESSORY GEP2010IL-00-A**



Plug-in connector straight
5 m - plug / socket M12
KAG500IL



Adapter plate
AP2010

► **RECOMMENDED ACCESSORY GEP2010IO-00-A**



2-Position-Sensor Cable
0,3 m - Connector M8
MFSP2SKHC-02



Plug-in connector Straight Cable
5m - Socket M8 (female)
KAG500B4



Plug-in connector customizable
Straight - Connector M8
S8-G-4



Magnetic field sensor Straight
Cable 0,3 m - Connector M8
MFS204SKHC



Magnetic field sensor Angled
Cable 0,3 m - Connector M8
MFS103SKHC



Plug-in connector Straight Cable
5m - Socket M8 (female)
KAG500



Plug-in connector customizable
Straight - Connector M8
S8-G-3



Adapter plate
AP2010

► **RECOMMENDED ACCESSORY GEP2010IO-05-A**

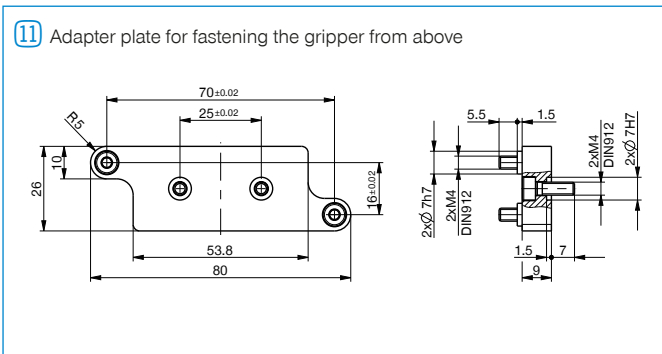


Plug-in connector Straight Cable
5m - Socket M8 (female)
KAG500B5



Adapter plate
AP2010

► **TECHNICAL DRAWINGS ACCESSORIES**



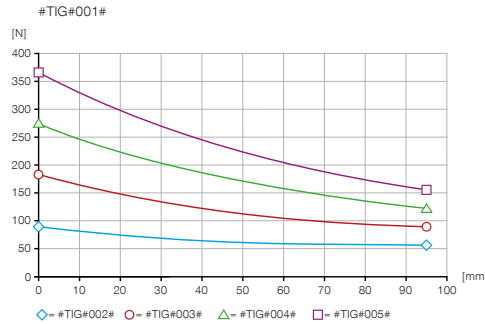
2-JAW PARALLEL GRIPPERS

INSTALLATION SIZE GEP2013

▶ PRODUCT SPECIFICATIONS



▶ Gripping force diagram



▶ Forces and moments

Displays static forces and moments that can also have an effect, besides the gripping force.



Mr [Nm]	13
Mx [Nm]	13
My [Nm]	10
Fa [N]	325

▶ TECHNICAL DATA

Order no.	▶ Technical Data		
	GEP2013IL-00-A	GEP2013IO-00-A	GEP2013IO-05-A
Control	IO-Link	I/O	I/O
Integrated position sensing	Using process data	No	Analog 0 to 10 V
Stroke per jaw [mm]	13	13	13
Gripping force safety device	mechanical	mechanical	mechanical
Control time [s]	0.055	0.055	0.055
Permissible weight per jaw max [kg]	0.15	0.15	0.15
Length of the gripper fingers max. [mm]	100	100	100
Repetition accuracy +/- [mm]	0.05	0.05	0.05
Voltage [V]	24	24	24
Current consumption max. [A]	2	2	2
Operating temperature [°C]	+5 ... +60	+5 ... +60	+5 ... +60
Minimum positioning path per jaw [mm]	0.5	0.5	0.5
Protection to IEC 60529	IP40	IP40	IP40
Weight [kg]	0.54	0.54	0.54

▶ TECHNICAL DATA OF THE FORCE LEVELS

Order no.	▶ Level 1		
	GEP2013IL-00-A	GEP2013IO-00-A	GEP2013IO-05-A
Gripping force [N]	90	90	90
Closing time / Opening time [s]	0.42 / 0.42	0.42 / 0.42	0.42 / 0.42

Order no.	▶ Level 2		
	GEP2013IL-00-A	GEP2013IO-00-A	GEP2013IO-05-A
Gripping force [N]	180	180	180
Closing time / Opening time [s]	0.32 / 0.32	0.32 / 0.32	0.32 / 0.32

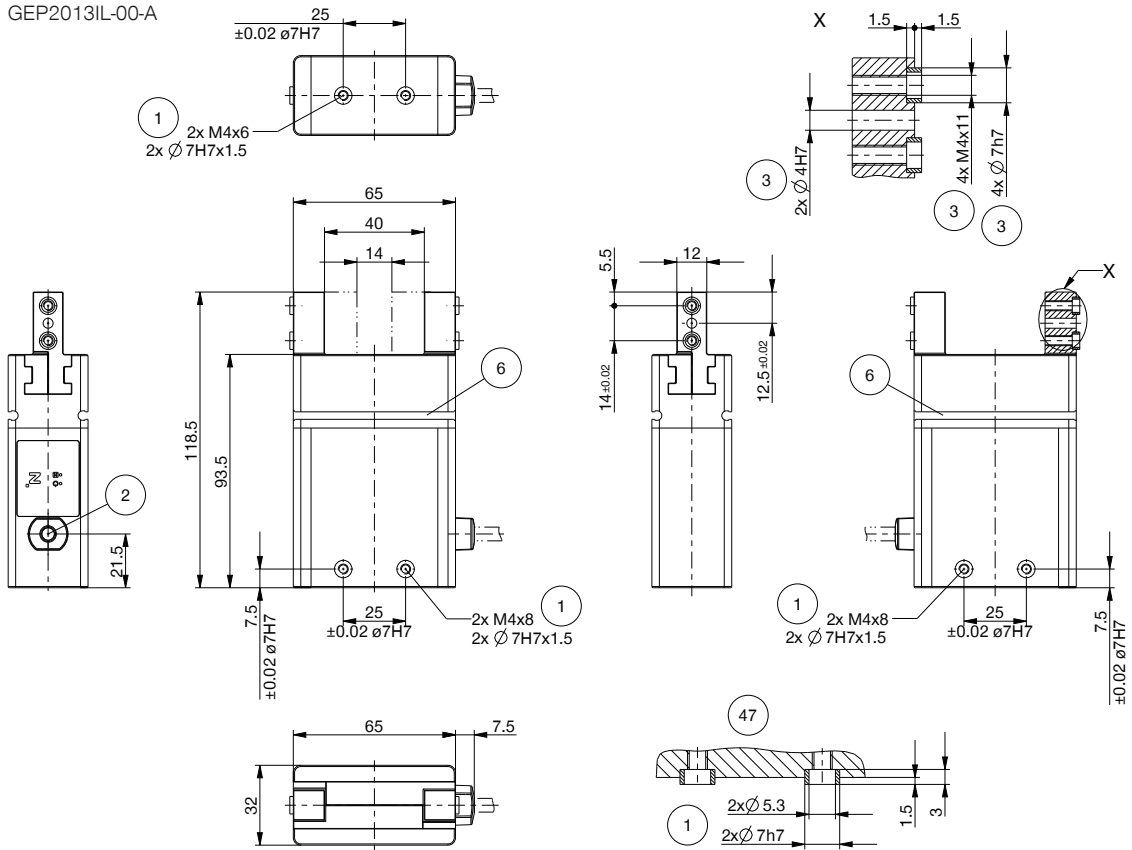
Order no.	▶ Level 3		
	GEP2013IL-00-A	GEP2013IO-00-A	GEP2013IO-05-A
Gripping force [N]	270	270	270
Closing time / Opening time [s]	0.26 / 0.26	0.26 / 0.26	0.26 / 0.26

Order no.	▶ Level 4		
	GEP2013IL-00-A	GEP2013IO-00-A	GEP2013IO-05-A
Gripping force [N]	360	360	360
Closing time / Opening time [s]	0.23 / 0.23	0.23 / 0.23	0.23 / 0.23

TECHNICAL DRAWINGS

- ① Gripper attachment
- ② Energy supply IO-Link (M12, 5-pole)
- ③ Fixing for gripper finger
- ⑥ Integrated slot for magnetic field sensor
- ④④ Energy supply (M8, 4-pole)
- ④⑤ Energy supply (M8, 5-pole)
- ④⑥ Gripping force setting
- ④⑦ Gripper mounting clamp

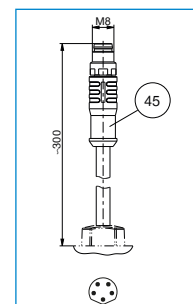
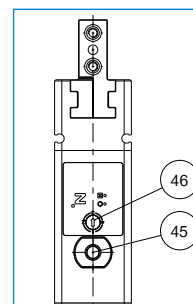
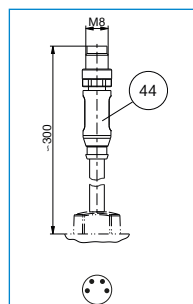
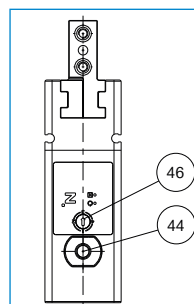
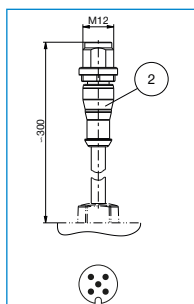
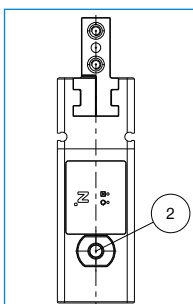
GEP2013IL-00-A



GEP2013IL-00-A

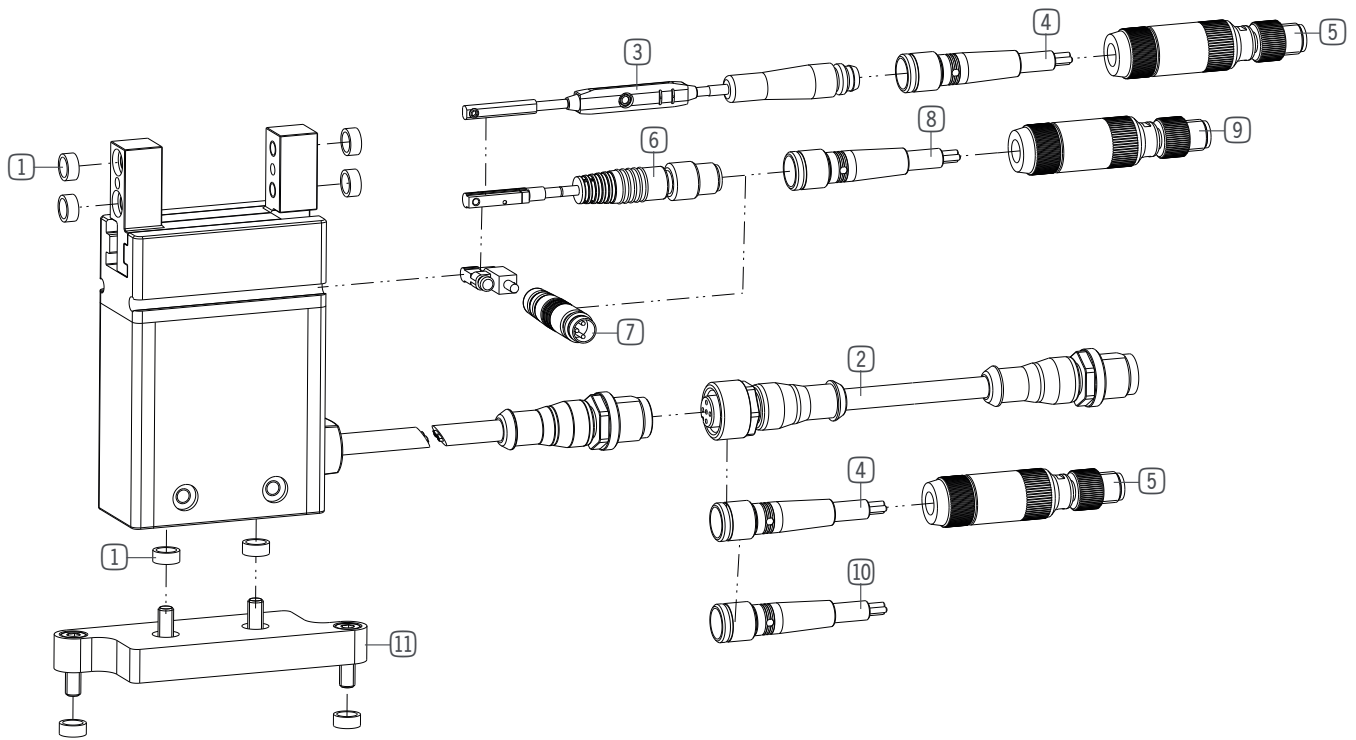
GEP2013IO-00-A

GEP2013IO-05-A



2-JAW PARALLEL GRIPPERS

INSTALLATION SIZE GEP2013



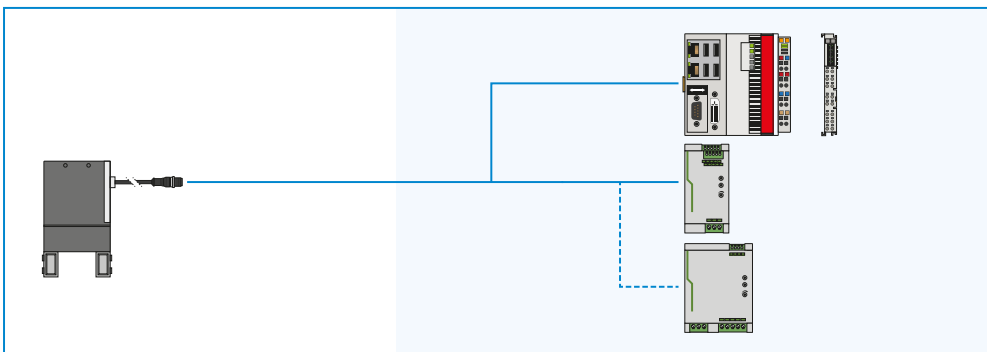
▶ INCLUDED IN DELIVERY



Centering Disc

390677

▶ YOU CAN FIND CONFIGURATION EXAMPLES ON PAGE 24 / 25



► **RECOMMENDED ACCESSORY GEP2013IL-00-A**



Plug-in connector straight
5 m - plug / socket M12
KAG500IL

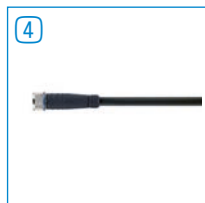


Adapter plate
AP2013

► **RECOMMENDED ACCESSORY GEP2013IO-00-A**



2-Position-Sensor Cable
0,3 m - Connector M8
MFSP2SKHC-02



Plug-in connector Straight Cable
5m - Socket M8 (female)
KAG500B4



Plug-in connector customizable
Straight - Connector M8
S8-G-4



Magnetic field sensor Straight
Cable 0,3 m - Connector M8
MFS204SKHC



Magnetic field sensor Angled
Cable 0,3 m - Connector M8
MFS103SKHC



Plug-in connector Straight Cable
5m - Socket M8 (female)
KAG500

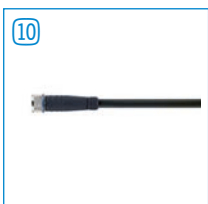


Plug-in connector customizable
Straight - Connector M8
S8-G-3



Adapter plate
AP2013

► **RECOMMENDED ACCESSORY GEP2013IO-05-A**

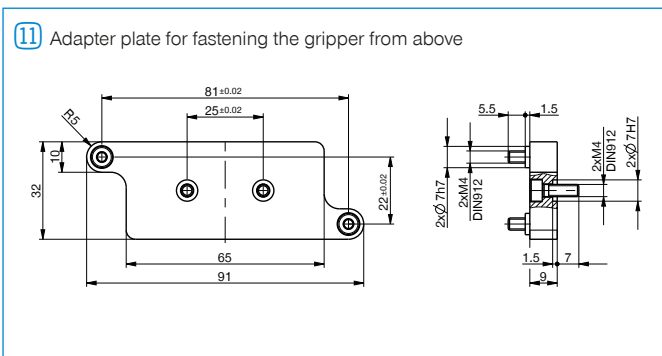


Plug-in connector Straight Cable
5m - Socket M8 (female)
KAG500B5



Adapter plate
AP2013

► **TECHNICAL DRAWINGS ACCESSORIES**



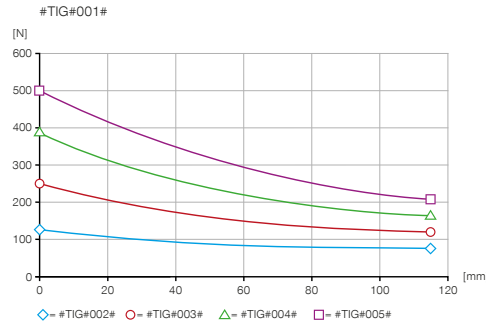
2-JAW PARALLEL GRIPPERS

INSTALLATION SIZE GEP2016

▶ PRODUCT SPECIFICATIONS



▶ Gripping force diagram



▶ Forces and moments

Displays static forces and moments that can also have an effect, besides the gripping force.



Mr [Nm]	28
Mx [Nm]	28
My [Nm]	20
Fa [N]	450

▶ TECHNICAL DATA

Order no.	▶ Technical Data		
	GEP2016IL-00-A	GEP2016IO-00-A	GEP2016IO-05-A
Control	IO-Link	I/O	I/O
Integrated position sensing	Using process data	No	Analog 0 to 10 V
Stroke per jaw [mm]	16	16	16
Gripping force safety device	mechanical	mechanical	mechanical
Control time [s]	0.055	0.055	0.055
Permissible weight per jaw max [kg]	0.21	0.21	0.21
Length of the gripper fingers max. [mm]	120	120	120
Repetition accuracy +/- [mm]	0.05	0.05	0.05
Voltage [V]	24	24	24
Current consumption max. [A]	2	2	2
Operating temperature [°C]	+5 ... +60	+5 ... +60	+5 ... +60
Minimum positioning path per jaw [mm]	0.5	0.5	0.5
Protection to IEC 60529	IP40	IP40	IP40
Weight [kg]	0.9	0.9	0.9

▶ TECHNICAL DATA OF THE FORCE LEVELS

Order no.	▶ Level 1		
	GEP2016IL-00-A	GEP2016IO-00-A	GEP2016IO-05-A
Gripping force [N]	125	125	125
Closing time / Opening time [s]	0.44 / 0.44	0.44 / 0.44	0.44 / 0.44

Order no.	▶ Level 2		
	GEP2016IL-00-A	GEP2016IO-00-A	GEP2016IO-05-A
Gripping force [N]	250	250	250
Closing time / Opening time [s]	0.39 / 0.39	0.39 / 0.39	0.39 / 0.39

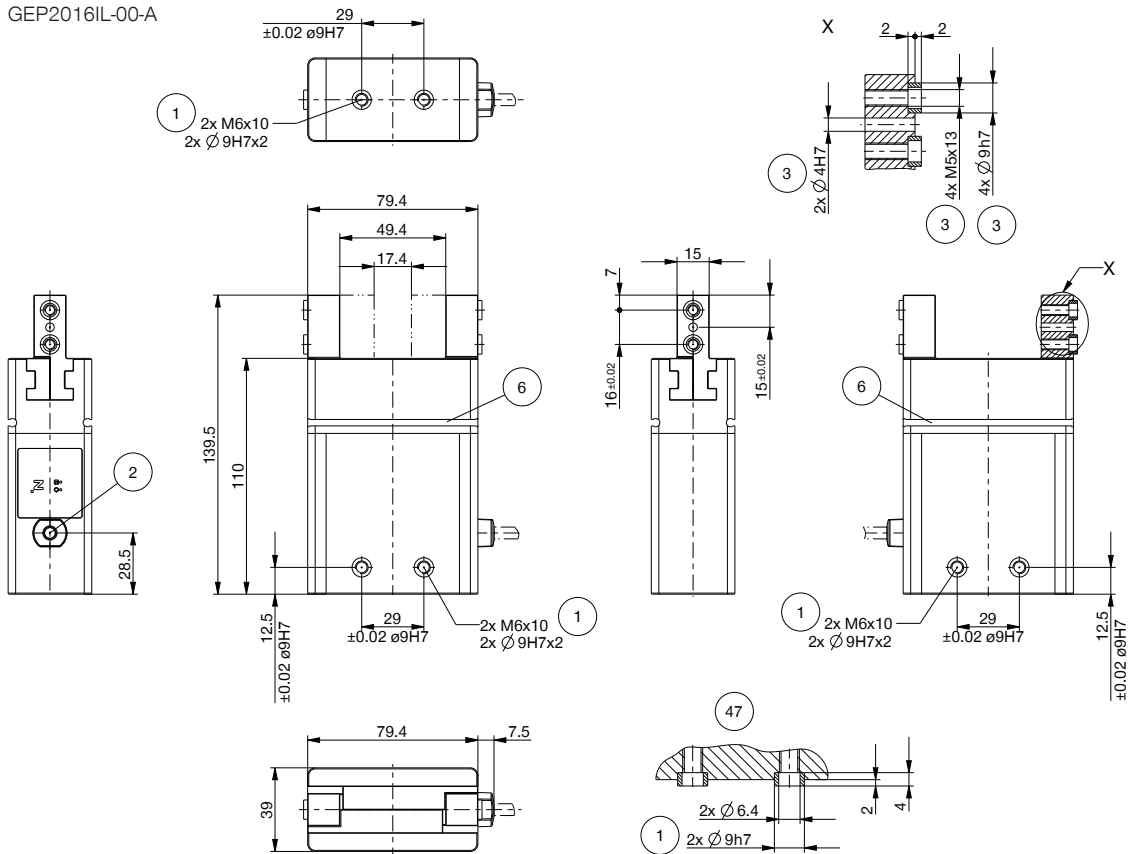
Order no.	▶ Level 3		
	GEP2016IL-00-A	GEP2016IO-00-A	GEP2016IO-05-A
Gripping force [N]	375	375	375
Closing time / Opening time [s]	0.35 / 0.35	0.35 / 0.35	0.35 / 0.35

Order no.	▶ Level 4		
	GEP2016IL-00-A	GEP2016IO-00-A	GEP2016IO-05-A
Gripping force [N]	500	500	500
Closing time / Opening time [s]	0.3 / 0.3	0.3 / 0.3	0.3 / 0.3

TECHNICAL DRAWINGS

- ① Gripper attachment
- ② Energy supply IO-Link (M12, 5-pole)
- ③ Fixing for gripper finger
- ⑥ Integrated slot for magnetic field sensor
- ④④ Energy supply (M8, 4-pole)
- ④⑤ Energy supply (M8, 5-pole)
- ④⑥ Gripping force setting
- ④⑦ Gripper mounting clamp

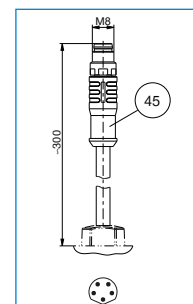
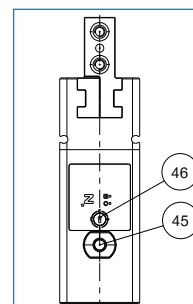
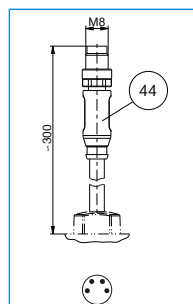
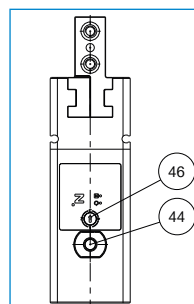
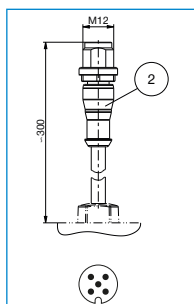
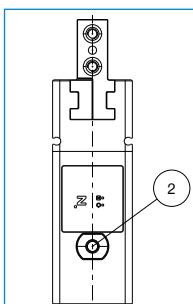
GEP2016IL-00-A



GEP2016IL-00-A

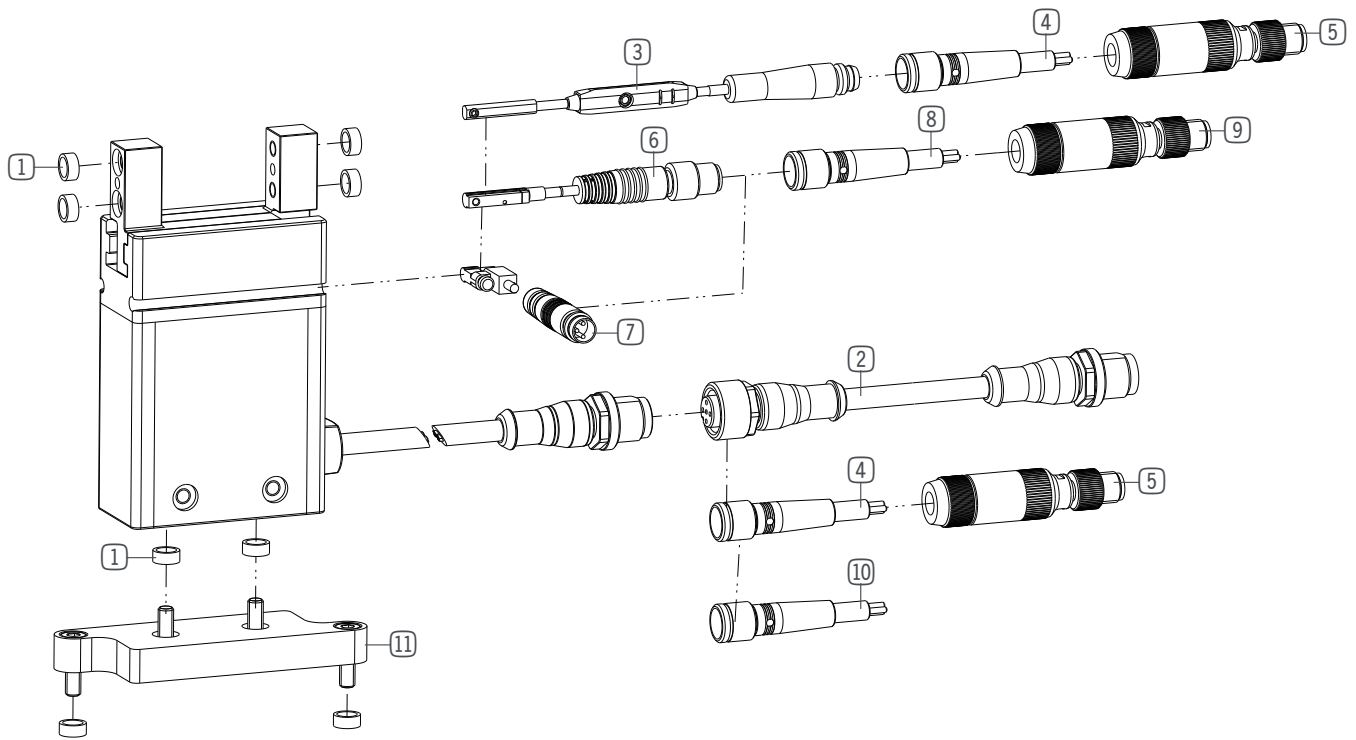
GEP2016IO-00-A

GEP2016IO-05-A



2-JAW PARALLEL GRIPPERS

INSTALLATION SIZE GEP2016



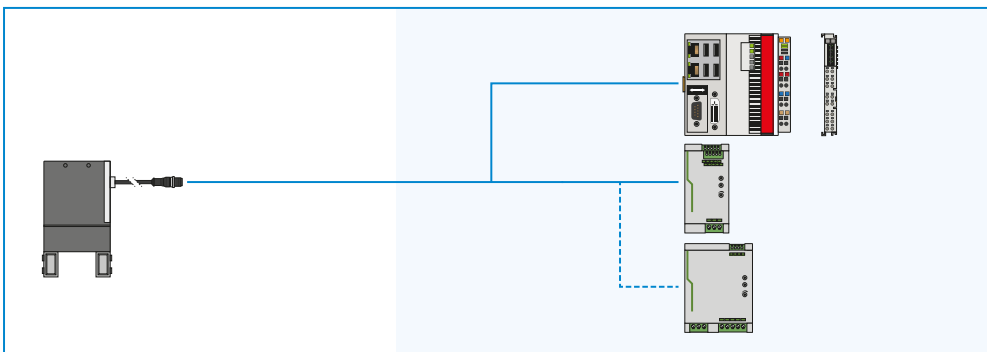
▶ INCLUDED IN DELIVERY



Centering Disc

343453

▶ YOU CAN FIND CONFIGURATION EXAMPLES ON PAGE 24 / 25



▶ **RECOMMENDED ACCESSORY GEP2016IL-00-A**



Plug-in connector straight
5 m - plug / socket M12
KAG500IL



Adapter plate
AP2016

▶ **RECOMMENDED ACCESSORY GEP2016IO-00-A**



2-Position-Sensor Cable
0,3 m - Connector M8
MFSP2SKHC-02



Plug-in connector Straight Cable
5m - Socket M8 (female)
KAG500B4



Plug-in connector customizable
Straight - Connector M8
S8-G-4



Magnetic field sensor Straight
Cable 0,3 m - Connector M8
MFS204SKHC



Magnetic field sensor Angled
Cable 0,3 m - Connector M8
MFS103SKHC



Plug-in connector Straight Cable
5m - Socket M8 (female)
KAG500



Plug-in connector customizable
Straight - Connector M8
S8-G-3



Adapter plate
AP2016

▶ **RECOMMENDED ACCESSORY GEP2016IO-05-A**

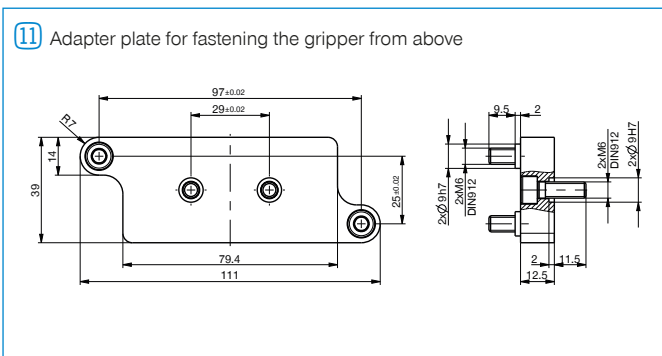


Plug-in connector Straight Cable
5m - Socket M8 (female)
KAG500B5



Adapter plate
AP2016

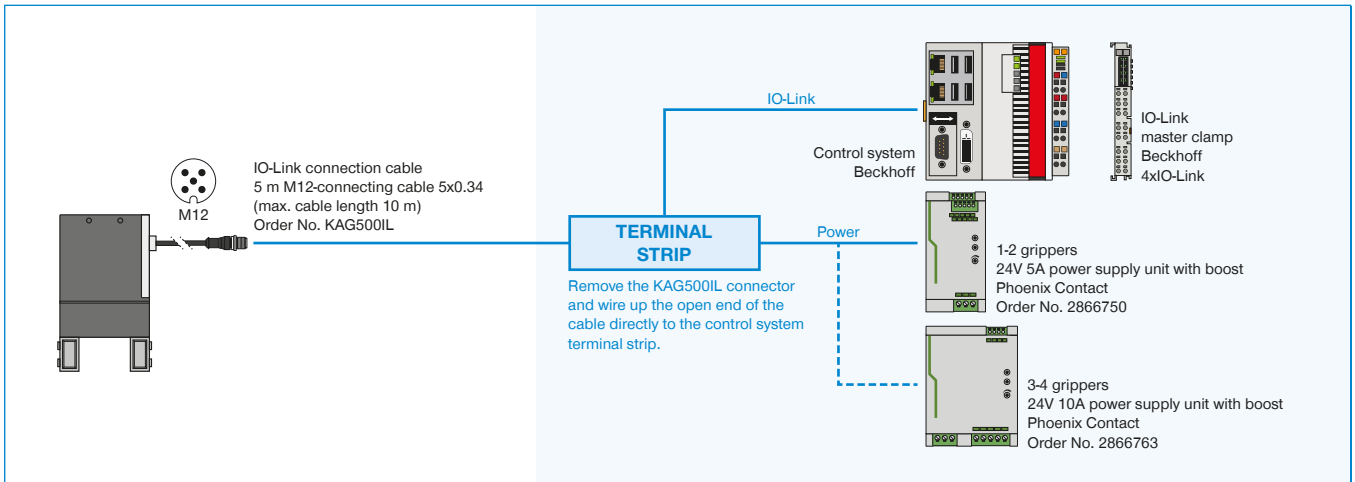
▶ **TECHNICAL DRAWINGS ACCESSORIES**



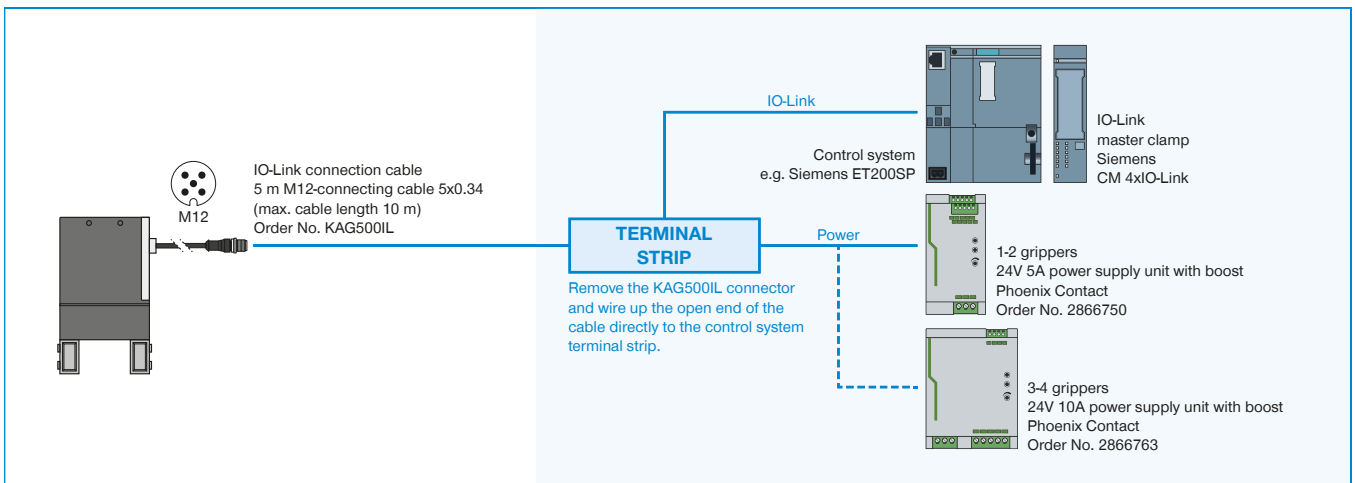
SECURED CONFIGURATION EXAMPLES

GEP2000 SERIES

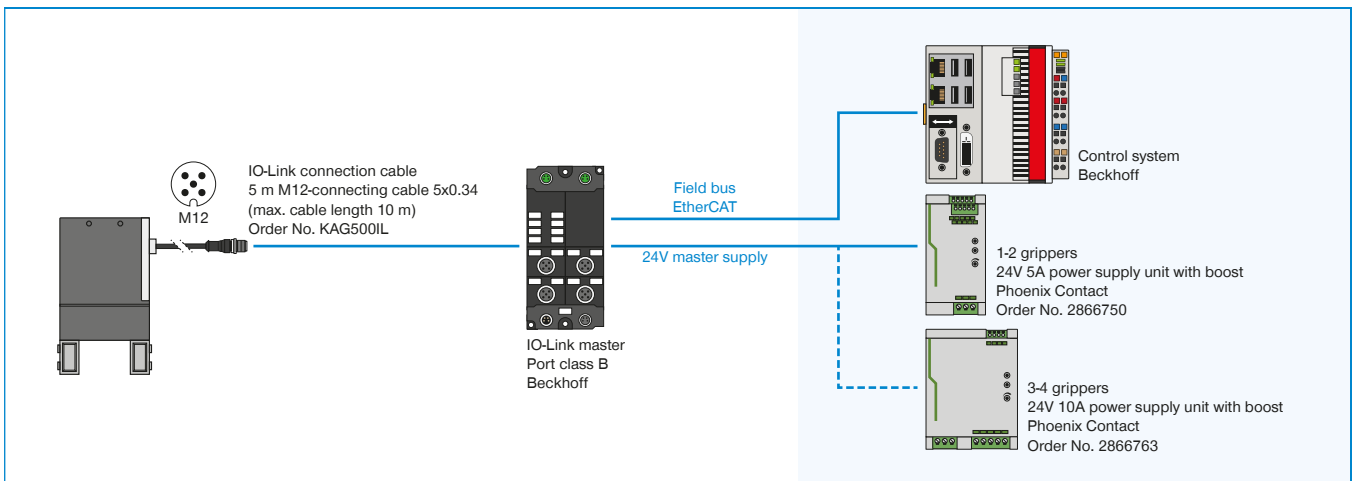
▶ GEP2000-IL-00-A (IO-LINK) WIRING TO CONTROL CABINET (BECKHOFF)



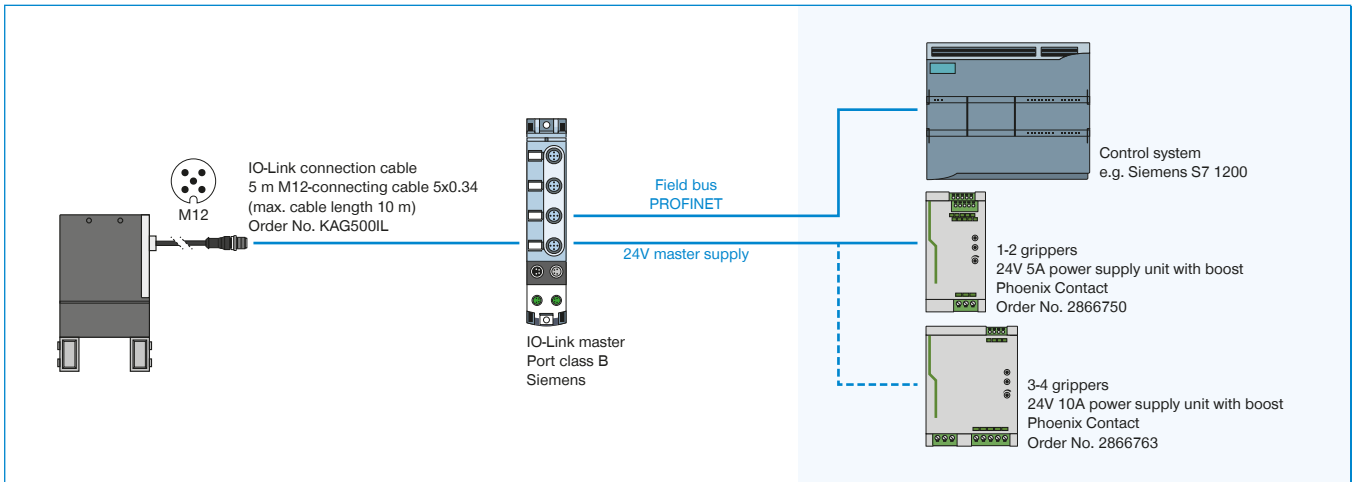
▶ GEP2000-IL-00-A (IO-LINK) WIRING TO CONTROL CABINET (SIEMENS)



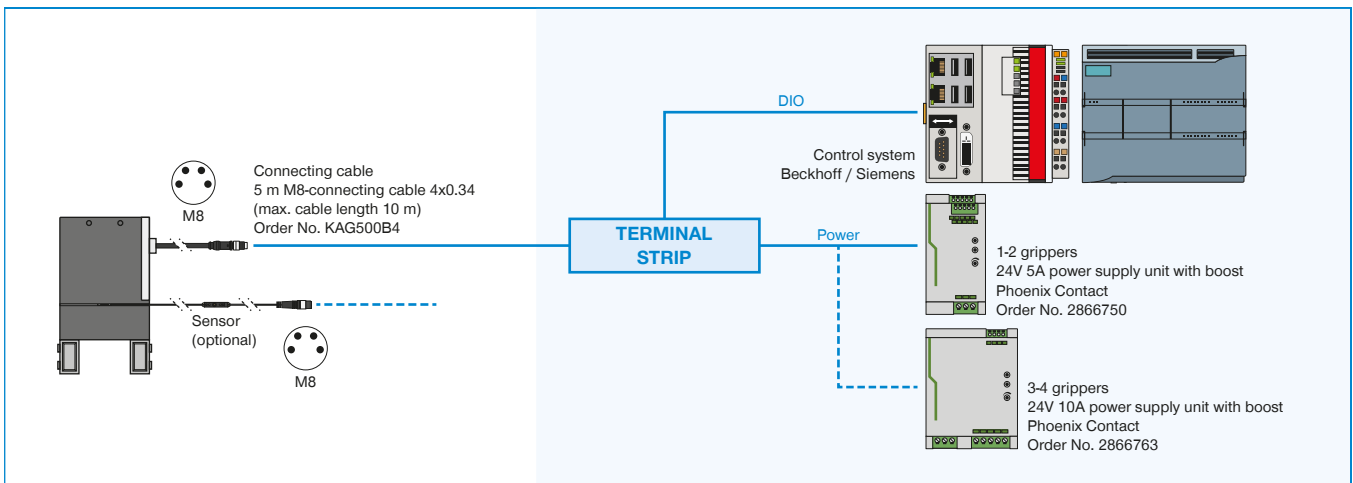
▶ GEP2000-IL-00-A (IO-LINK) WIRING TO IO-LINK MASTER IP67 (BECKHOFF)



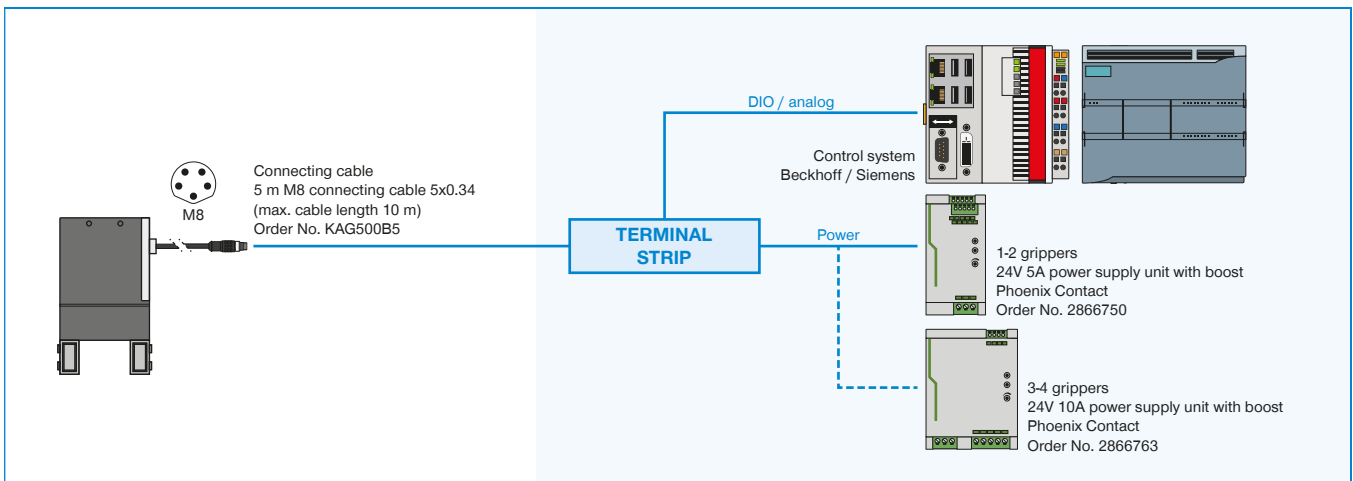
▶ GEP2000-IL-00-A (IO-LINK) WIRING TO IO-LINK MASTER IP67 (SIEMENS)



▶ GEP2000-IO-00-A (DIGITAL IO) WIRING TO CONTROL CABINET



▶ GEP2000-IO-05-A (DIGITAL IO / ANALOG) WIRING TO CONTROL CABINET



CHECKLIST GRIPPER

Customer number	<input type="text"/>	Telephone number	<input type="text"/>
Company	<input type="text"/>	Fax number	<input type="text"/>
Contact Mr. <input type="checkbox"/> Mrs. <input type="checkbox"/>	<input type="text"/>	E-Mail	<input type="text"/>
<input type="checkbox"/> Request	Desired date	<input type="text"/>	Req. No. <input type="text"/>
<input type="checkbox"/> Order			Ord No. <input type="text"/>
<input type="checkbox"/> Parallel gripper	<input type="checkbox"/> Three-jaw gripper	<input type="checkbox"/> Angular gripper	
<input type="checkbox"/> Other / If yes, which type	<input type="text"/>		

Drive

Pneumatic Electric Hydraulic

Operating pressure bar Voltage Volts

Required stroke

Per jaw mm or Total stroke mm

Gripper finger length

Gripper top edge to force application point mm

Ambient conditions

Clean / Dry Small amount of swarf
Coolant overspray Large amount of swarf Coolant
under pressure of grinding agents

Chemical substances / If yes, which

Temperature °C Cycles per minute

Required force

Gripping force N or Workpiece weight kg g

Gripping type

Gripping inward Gripping outward

Frictional fit Form fit

Prism angle ° Coefficient of friction Axis acceleration m/s²

Self Locking

Not required When closing When opening Pressure safety valve

Desired accessories

Inductive sensor Magnetic field sensor With cable Pluggable

Separate cable / If yes, how long m

Straight fitting

Angled fitting

Pressure safety valve

Pneumatic fittings / If yes, which

Straight

Angled

Flow control valve

Notes/comments

Editor/Date

Desired accessories

Sketch 3D model Other

USAGE NOTE

GENERAL

The contents of this catalog are not legally binding and are intended solely for informational purposes. Any final agreement will be in the form of a written order confirmation from ZIMMER GMBH, which occurs only subject to the respective current General Terms and Conditions of Sale and Delivery of ZIMMER GMBH. These can be found online at www.zimmer-group.com.

All of the products listed in this catalog are designed for their intended use, e.g. machines for automation. The recognized technical regulations for safety and professional work must be followed for use and installation.

Furthermore, the respective laws, guidelines from TÜV, guidelines from the respective trade association and VDE stipulations shall apply.

The technical data listed in this catalog must be observed by the user. The conditions of use may not fall below or exceed the specified data. If information is missing, it cannot be assumed that there are no upper or lower limits or no limitations for specific use cases. Consultation is required in these cases.

Disposal is not included in the price, which would have to be taken into account accordingly in the event of return to or disposal by ZIMMER GMBH.

TECHNICAL DATA AND FIGURES

The technical data and figures have been compiled with great care and to the best of our knowledge. We cannot guarantee that the information is up to date, correct or complete.

The specifications and information—such as figures, drawings, descriptions, dimensions, weights, materials, technical and other performance data and the described products and services—contained in general product descriptions, ZIMMER GMBH catalogs, brochures and price lists in any form are subject to change and may be modified or updated at any time without prior notification. They are binding only to the extent expressly specified in a contract or order confirmation. Slight deviations from such descriptive product information shall be considered approved and shall not affect fulfillment of agreements insofar as they are reasonable for the customer.

LIABILITY

Products from Zimmer Group are subject to the German Product Liability Act. This catalog does not contain any guarantees, assurances of quality or procurement agreements for the products it depicts, neither expressly nor implied, including for the availability of products. Advertising statements relating to quality features, properties or applications for the products are not legally binding.

To the extent permitted by law, ZIMMER GMBH is exempt from any liability for direct or indirect damage, subsequent damage and requests of any kind or on any legal basis resulting from the use of information contained in this catalogue.

TRADEMARK, COPYRIGHT AND REPRODUCTION

The depiction of commercial property rights in this catalog—such as brands, logos, registered trademarks or patents—does not include the granting of licenses or use rights. Their use is not permitted without the expressed written agreement of ZIMMER GMBH. All contents of this catalog are the intellectual property of ZIMMER GMBH. For the purposes of copyright, any unlawful use of intellectual property, including excerpts, is prohibited. Reprinting, copying or translating (including in the form of excerpts) are permitted only with the prior written consent of ZIMMER GMBH.

STANDARDS

Zimmer Group has a quality management system certified in accordance with ISO 9001:2008. Zimmer Group has an environmental management system certified in accordance with ISO 14001:2004.

USAGE NOTE

INDIVIDUAL

DECLARATION OF INCORPORATION IN TERMS OF THE EC DIRECTIVE 2006/42/EC ON MACHINERY (ANNEX II 1 B)

We hereby declare that our elements meet the following basic requirements of the Machinery Directive 2006/42/EC as an incomplete machine

No.1.1.2., No.1.1.3., No.1.1.5., No.1.3.2, No. 1.3.4, No. 1.3.7, No.1.5.3, No.1.5.4, No.1.5.8., No.1.6.4, No.1.7.1, No.1.7.3, No.1.7.4.

We also declare that the specific technical documents were produced in accordance with Annex VII Part B of this Directive. We undertake to provide the market supervisory bodies with electronic versions of the incomplete machine's special documents via our documentation department should they have reason to request them.

The incomplete machine may only be commissioned if the machine or system in which the incomplete machine is to be installed has been determined to satisfy the conditions of the Machinery Directive 2006/42/EC and the EC Declaration of Conformity has been produced in accordance with Annex II A.

The contents and data correspond to the status as of printing. Edition 09/2017.

This catalog was created with great care and all information has been checked for accuracy. However, we assume no liability for incorrect or incomplete information. Zimmer Group reserves the right to technical changes and improvements through constant ongoing development of products and services. All text, images, depictions and illustrations in this catalog are the property of Zimmer Group and protected by copyright. Any duplicating, editing, changing, translating, filming, processing or saving in electronic systems is prohibited without the consent of Zimmer Group.