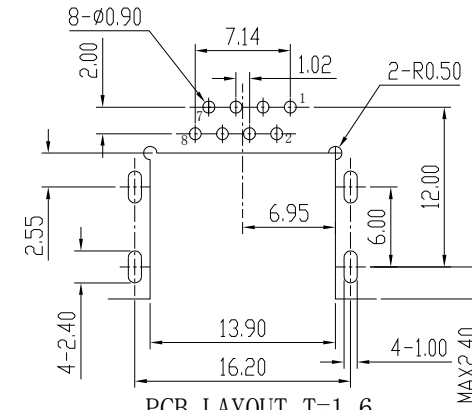
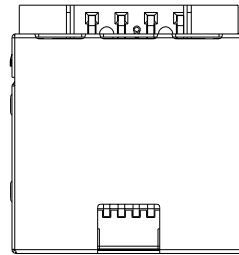
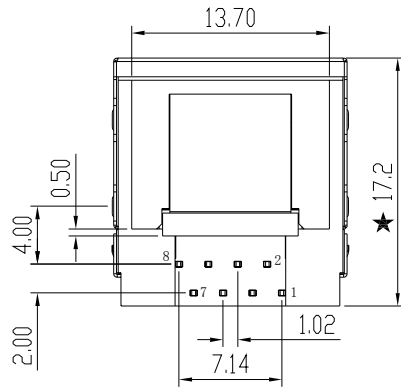
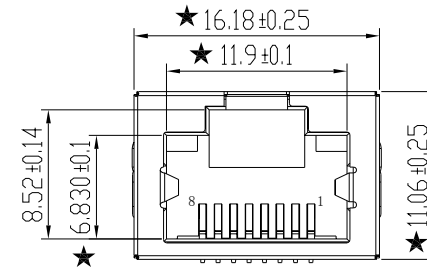
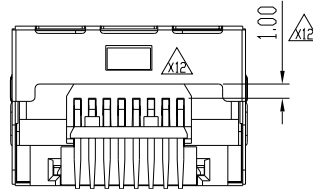
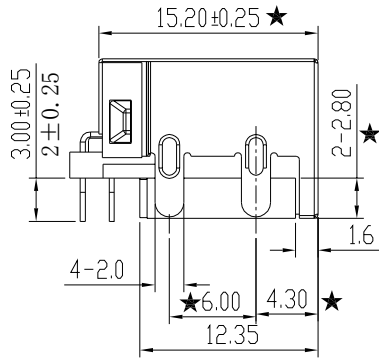


NO.	ECN NO.	DESCRIPTION	REV.	DRAW	DATE



PCB LAYOUT T=1.6
TOLERANCE ±0.05

ELECTRICAL:

- 1. VOLTAGE RATING : 150 VAC RMS.
- 2. CURRENT RATING : 1.5 AMP.
- 3. CONTACT RESISTANCE : 20 MILLIOHMS MAX.
- 4. INSULATION RESISTANCE : 1000 MEGOHMS MIN @ 500 VDC.
- 5. DIELECTRIC STRENGTH : 1000V D.C. OR A.C. PEAK; ONE CONTACT TO ALL OTHER CONTACTS CONNECTED TOGETHER.
: 1500V D.C. OR A.C. PEAK; ALL CONTACTS CONNECTED TOGETHER TO SHIELD, (HOUSING/MOUNTING PLATE) IF PRESENT.
@ 0.5mA 50 Hz OR 60 Hz A MINUT

MECHANICAL:

- 1. DURABILITY : 750 CYCLES.
- 2. MATING/UNMATING FORCE : 30N Max.
- 3. RETENTION STRENGTH : 30N FOR 60S±5S.

MATERIAL:

- 1. HOUSING MATERIAL : LCP, BLACK.
- 2. CONTACT MATERIAL : PHOSPHOR BRONZE T=0.35mm.
- 3. SHIELD MATERIAL : 0.2MM COPPER ALLOY, PLATED WITH NICKEL.
- 4. CONTACT PLATING : 1: CONTACT AREA 6µ" GOLD PLATING.
2: SOLDER AREA Sn PLATING.

ENVIRONMENTAL:

- OPERATION TEMPERATURE: -40°c-+85°c
- STORAGE TEMPERATURE: -40°c-+85°c RELATIVE HUMIDITY<80%
- STORAGE TIME :12 MONTHS

TOLERANCE		APPS Electronics Limited	
.X	±0.25	X.°	±2°
.XX	±0.15	.X.°	±1°
.XXX	±0.075		
SCALE	1:1	PROJ.	DESIGN
SHEET	1/1	SIZE	A4
UNIT	mm	REV.	A
		APPROVE	DWG NO.
			TITLE
			1*1 RJ45 Connector
			ITEM NO.
			AE-RJC102Z04