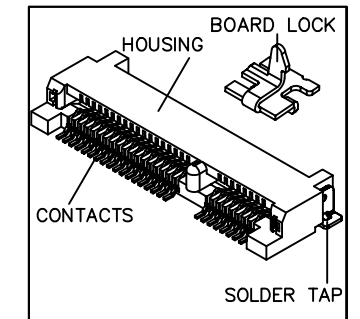
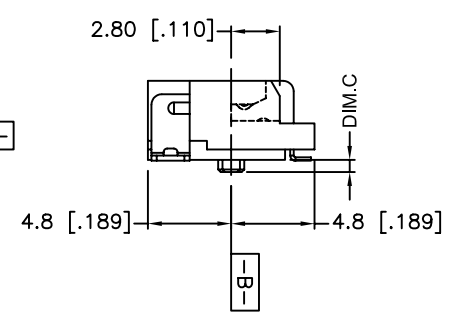
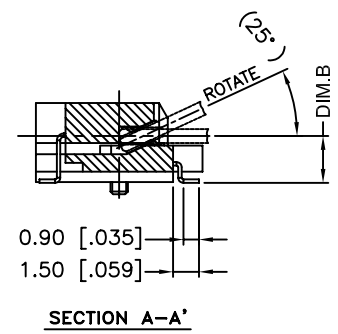
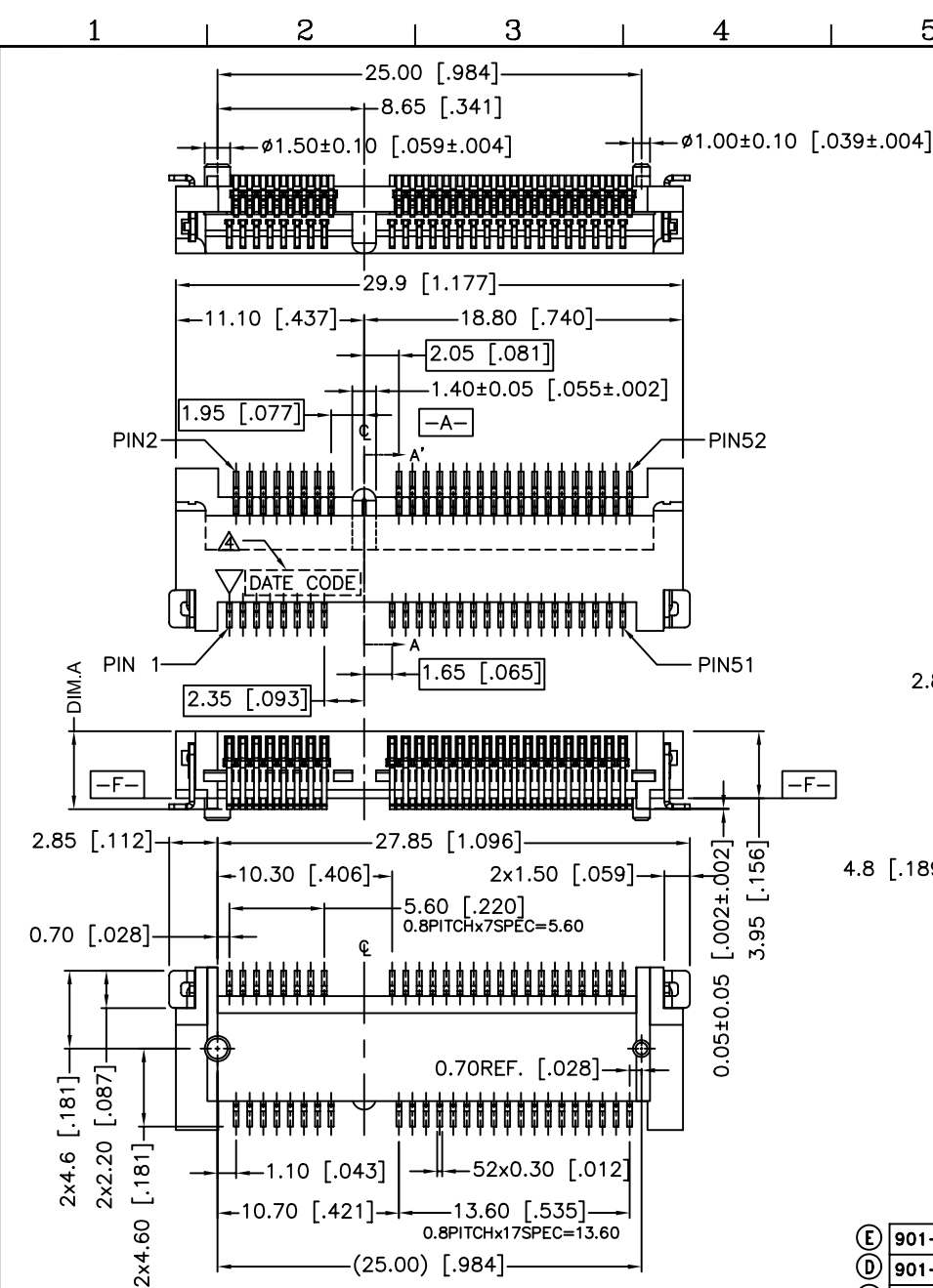


A
B
C
D
E
F



NOTE:
1. MATERIAL:
CONTACTS—COPPER ALLOY.
HOUSING—UL 94V-0 RATED LCP, COLOR:BLACK
SOLDER TAPS—COPPER ALLOY.
2. FINISH:
CONTACTS—GOLD FLASH ON MATING AREA
120u" TIN PLATING AT SOLDERING TAILS,
OVER 50u" MIN. NICKEL UNDERPLATING OVERALL.
SOLDER TAPS—100u" MIN TIN PLATED.
BOARD LOCKS—100u" MIN TIN PLATED.
3. PROD. NUMBER: SEE 901-002-0000.
PROD.CODE SPECIFICATION.

9	01	-	0	02	-	*0	08	
CUSTOMER	PROD. SERIES TYPE		CONTACT TYPE & MATING PORT	POSITION & CONNECTOR STYLE & TERMINATION TYPE		MODIFICATION (FLOATING NO.)	CONTACT FOR SPECIAL REQUEST ONLY	
PCI EXPRESS MINI CARD SERIES						08 = G/F	□ = FOR GENERAL R = FOR TAPE&REEL	

THE LOT IDENTIFICATION CODE ARE MARKING BY BLACK INK PRINT; THE HIGHT OF CODE IS 2mm.

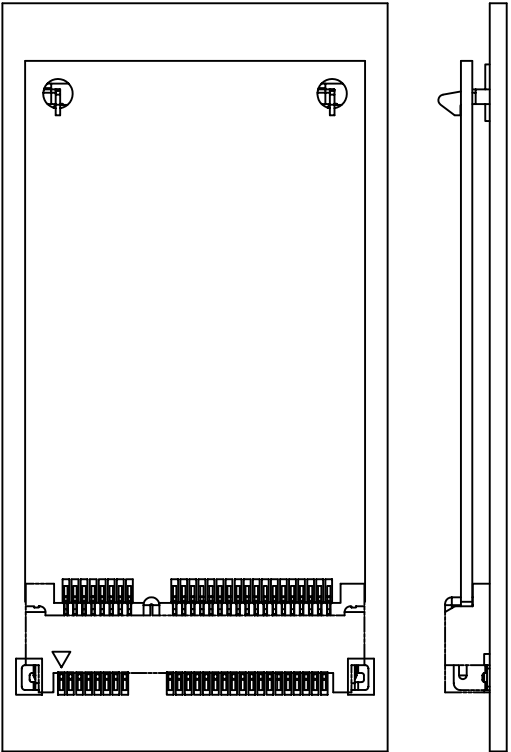
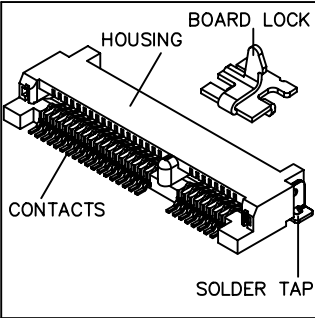
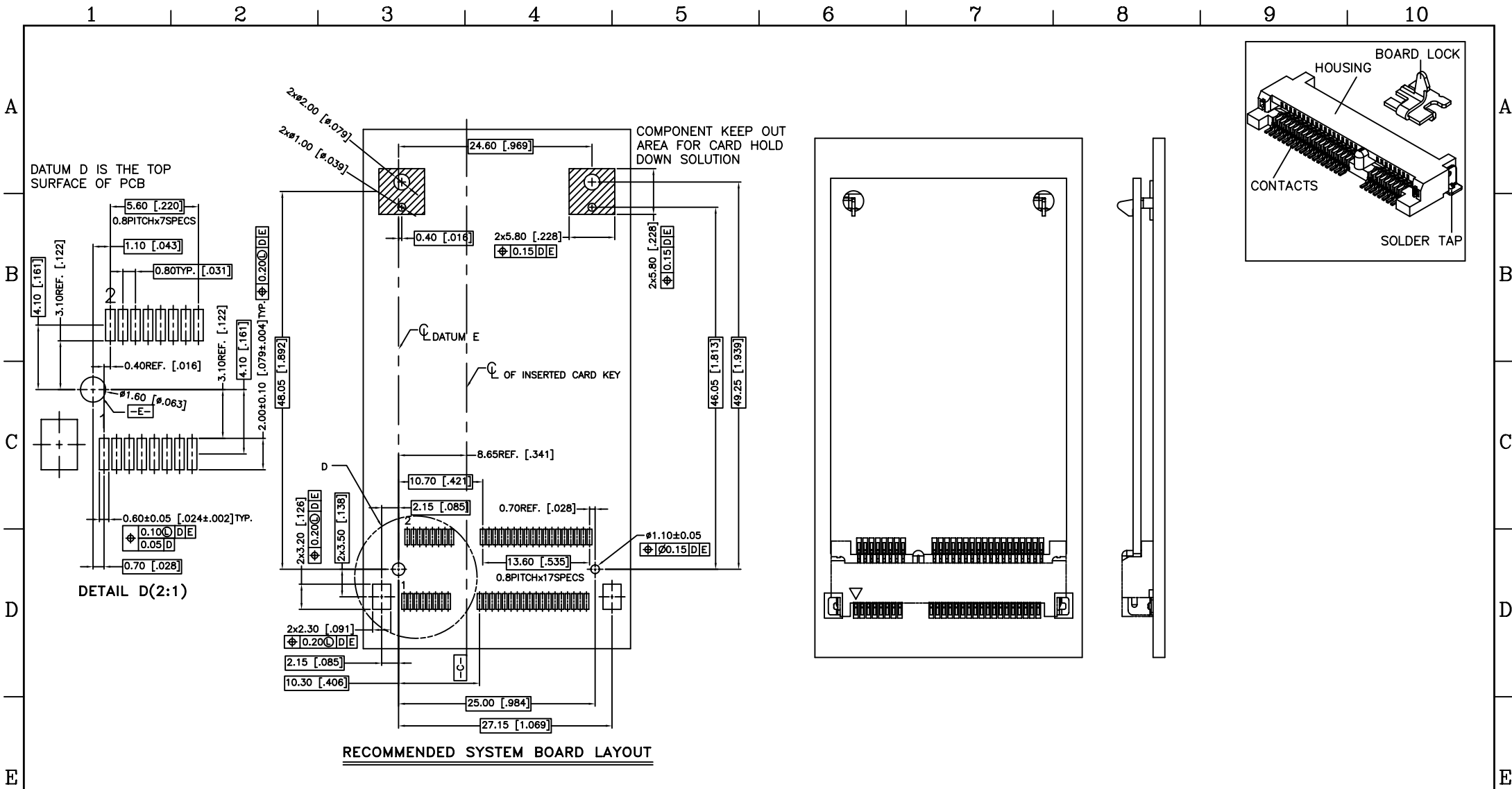
* 0 0 2 2
WEEK
THE LAST TWO DIGIT A.D. YEAR.
MANUFACTURE

D	SE17-2008-011	ADD P/N:901-002-0008	H=4.85mm	Mari	01.20'2006
D	SE17-2008-010	ADD P/N:901-002-5108	H=5.75mm	Mari	01.12'2006
C	SE17-2008-001	ADD P/N:901-002-4008	H=6.75mm	Mari	12.30'2005
B	SE17-2008-047	ADD P/N:901-002-3008	H=4.8mm	Mari	06.03'2005
A	E17-2008-008	DWG.REL.		Mari	01.25'2005
REV	ECN NO	DESCRIPTION		APPD.	DATE


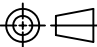
(E)	901-002-6008	4.85mm	2.95mm	0.70
(D)	901-002-5108	5.75mm	3.85mm	1.85
(C)	901-002-4008	6.75mm	4.85mm	
(B)	901-002-3008	4.6mm	2.70mm	
	901-002-2008	6.0mm	4.10mm	0.70
	901-002-1008	5.2mm	3.30mm	
	901-002-0008	4.0mm	2.10mm	
	PROD. NO.	DIM.A±0.05	DIM.B	DIM.C

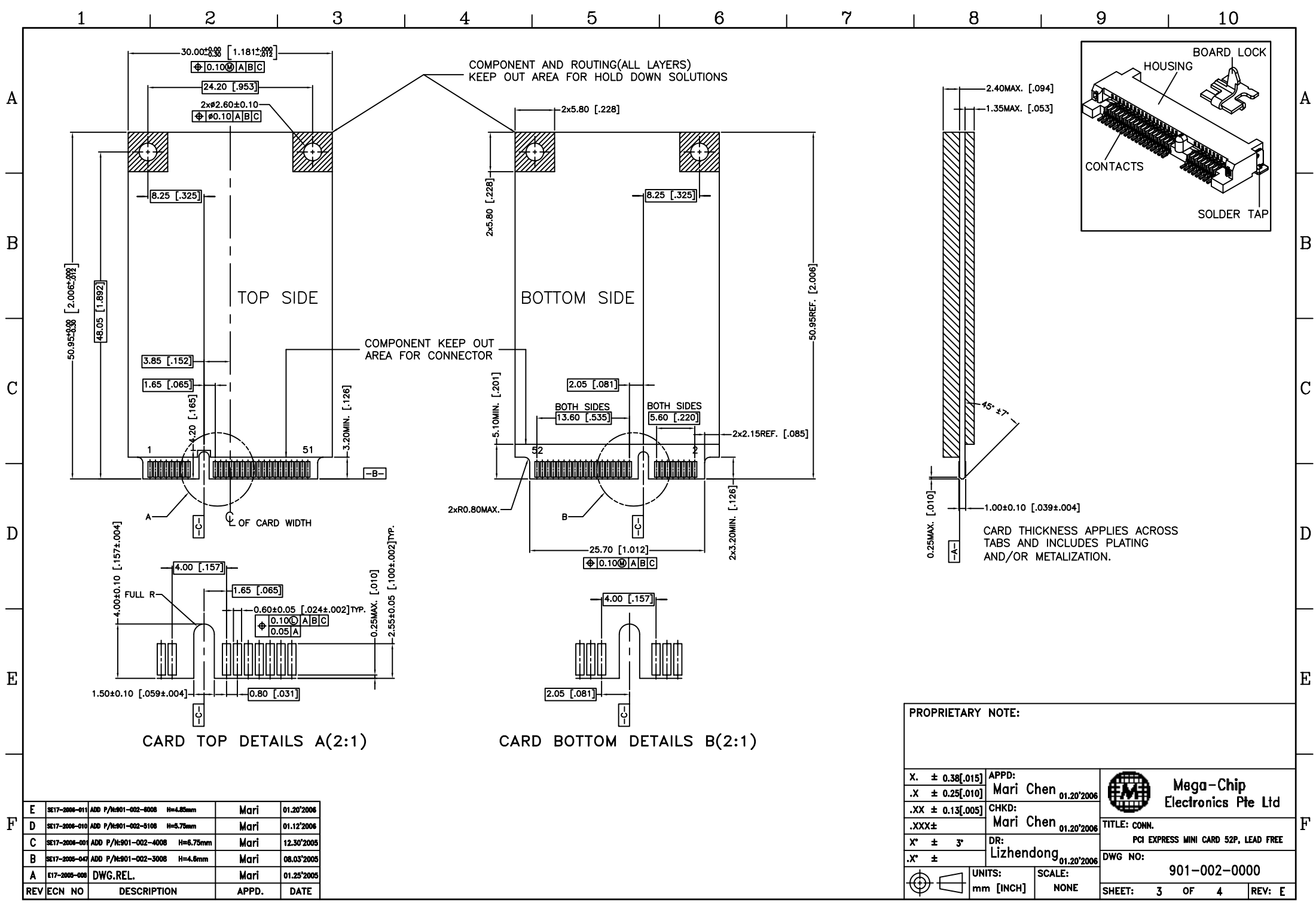
PROPRIETARY NOTE:

X. ± 0.38[.015]	APPD: Mari Chen 01.20'2006		Mega-Chip Electronics Pte Ltd	
.X ± 0.25[.010]	CHKD: Mari Chen 01.20'2006			
.XX ± 0.13[.005]	DR: Lizhendong 01.20'2006			
.XXX±				
X' ± 3'				
.X' ±		UNITS: mm [INCH]	SCALE: NONE	TITLE: CONN.
				PCI EXPRESS MINI CARD 52P, LEAD FREE
				DWG NO: 901-002-0000
				SHEET: 1 OF 4
				REV: E


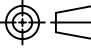


E	SE17-2006-011	ADD P/H:901-002-0008	H=4.85mm	Mari	01.20'2006
D	SE17-2006-010	ADD P/H:901-002-0108	H=5.79mm	Mari	01.12'2006
C	SE17-2006-009	ADD P/H:901-002-4008	H=6.75mm	Mari	12.30'2005
B	SE17-2005-047	ADD P/H:901-002-3008	H=4.6mm	Mari	08.03'2005
A	E17-2005-008	DWG.REL.		Mari	01.25'2005
REV	ECN NO	DESCRIPTION		APPD.	DATE

PROPRIETARY NOTE:					
X. ± 0.38[.015]	APPD:	 Mega-Chip Electronics Pte Ltd			
.X ± 0.25[.010]	Mari Chen				
.XX ± 0.13[.005]	CHKD:	TITLE: CONN.			
.XXX ±	Mari Chen	PCI EXPRESS MINI CARD 52P, LEAD FREE			
X" ± 3"	DR:	DWG NO: 901-002-0000			
.X" ±	Lizhendong	SHEET: 2 OF 4 REV: E			
	UNITS:	SCALE:			
	mm [INCH]	NONE			



E	SE17-2006-011	ADD P/N:901-002-0008	H=4.85mm	Mari	01.20'2006
D	SE17-2006-010	ADD P/N:901-002-5108	H=5.75mm	Mari	01.12'2006
C	SE17-2006-009	ADD P/N:901-002-4008	H=6.75mm	Mari	12.30'2005
B	SE17-2006-007	ADD P/N:901-002-3008	H=4.6mm	Mari	08.03'2005
A	E17-2005-008	DWG.REL.		Mari	01.25'2005
REV	ECN NO	DESCRIPTION		APPD.	DATE

PROPRIETARY NOTE:			
X. ± 0.38[.015]	APPD:	 Mega-Chip Electronics Pte Ltd	
.X ± 0.25[.010]	Mari Chen		
.XX ± 0.13[.005]	CHKD:	TITLE: CONN. PCI EXPRESS MINI CARD 52P, LEAD FREE	
.XXX ±	Mari Chen		
X" ± 3"	DR:	DWG NO: 901-002-0000	
.X" ±	Lizhendong		
	UNITS:	SCALE: NONE	
	mm [INCH]		
SHEET: 3 OF 4		REV: E	

Performance Criterion:

- Electrical—

Current Rating: 0.50A min. power contact (continuous).

Low Level Contact Resistance: 55 m Ω max. initial, per contact;
20 m Ω max. change allowed.

Dielectric Withstanding Voltage: >300VAC.(RMS) at sea level.

Insulation Resistance: >500M Ω at 500VDC.

- Mechanical—

Durability: 50 cycles.

Total mating / unmating force: 2.30 Kg max.

*Card mating/unmating sequence:

1. Insert the card at the angle specified by the manufacturer.
2. Rotate the card into position.
3. Reverse the installation sequence to unmate.


Contact retention force: 0.50Kg (1.10lbs) min.

Vibration: no current interruption greater than 100ns.

- Environmental—

Operating Temperature: -40°C to +80°C.

Storage Temperature: -40°C to +70°C, 95% RH.

TITLE: SPECIFICATION	 Mega-Chip Electronics Pte Ltd	
	APPD:	Mari Chen 01.20'2006
PROD SERIES: CONN. PCI EXPRESS MINI CARD 52P, LEAD FREE	CHKD:	Mari Chen 01.20'2006
DWG NO: 901-002-0000	PR:	Lizhendong 01.20'2006
SHEET: 4 OF 4		REV: E