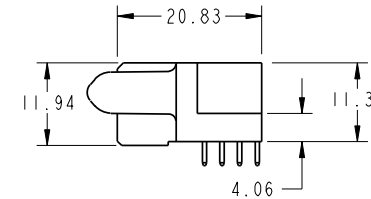
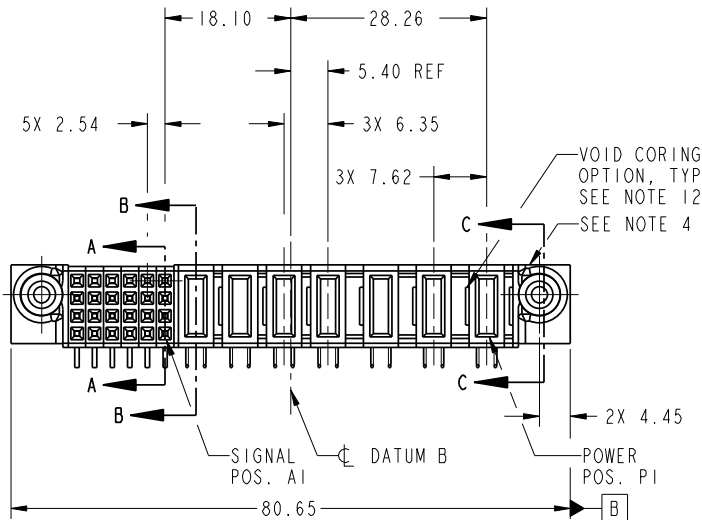


Tous droits strictement réservés. Reproduction ou communication a des tiers interdite sous quelque forme que ce soit sans autorisation écrite du propriétaire. Propriété de c FCI. Droits de reproduction FCI.



All rights strictly reserved. Reproduction or issue to third parties in any form whatever is not permitted without written authority from the proprietor. Property of FCI. Copyright FCI.

|                       |                  |        |   |   |   |   |       |   |    |    |    |    |    |    |    |    |   |   |   |   |   |   |    |    |    |    |    |    |    |  |
|-----------------------|------------------|--------|---|---|---|---|-------|---|----|----|----|----|----|----|----|----|---|---|---|---|---|---|----|----|----|----|----|----|----|--|
| PRODUCT NO.           | ROWS             | SIGNAL |   |   |   |   | POWER |   |    |    |    |    |    | E1 |    |    |   |   |   |   |   |   |    |    |    |    |    |    |    |  |
|                       |                  | E2     | 6 | 5 | 4 | 3 | 2     | 1 | P7 | P6 | P5 | P4 | P3 |    | P2 | P1 |   |   |   |   |   |   |    |    |    |    |    |    |    |  |
| 51915-162--<br>NOTE 3 | D<br>C<br>B<br>A |        | H | H | H | H | H     | G | G  | G  | G  | G  | F  | F  | F  | F  | F | E | E | E | E | E | PC | PC | PC | PC | PA | PC | PC |  |



| CODE | DIM "M" MATING LENGTH | CONTACT TYPE |
|------|-----------------------|--------------|
| PC   | [2.34]                | POWER        |
| H    | [N/A]                 | SIGNAL       |
| G    | [N/A]                 | SIGNAL       |
| F    | [N/A]                 | SIGNAL       |
| E    | [N/A]                 | SIGNAL       |
| PA   | [1.07]                | POWER        |

|                       |                |    |          |                                       |            |            |                 |                    |        |
|-----------------------|----------------|----|----------|---------------------------------------|------------|------------|-----------------|--------------------|--------|
| mat'l code SEE NOTE 2 |                |    |          | tolerances unless otherwise specified |            | CUSTOMER   |                 | FCI                |        |
| lfr                   | ecn no.        | dr | date     | linear                                | 0.X ±0.5   | COPY       |                 | www.fciconnect.com |        |
| A                     | DG08-0119      | JC | 05/20/08 | linear                                | 0.XX ±0.25 | projection | title           |                    |        |
|                       |                |    |          | angles                                | 0.XXX ±0.1 |            | 3ACP + 4P + 24S |                    |        |
|                       |                |    |          | dr                                    | 0 ±2       | MM         | product family  | PwrBlade           | code   |
|                       |                |    |          | engr                                  |            | 1:1        | size            | dwg no             | 213    |
|                       |                |    |          | chr                                   |            |            | A               | 51915-162          | sheet  |
|                       |                |    |          | appd                                  |            |            |                 |                    | 1 of 4 |
| sheet index           | revision sheet | A  | A        | A                                     | A          |            |                 |                    |        |
|                       |                | 1  | 2        | 3                                     | 4          |            |                 |                    |        |

Pro/E

cage code 22526

PDM: Rev:A

STATUS: Released

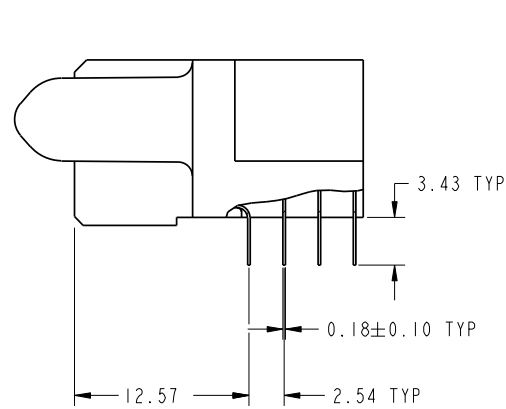
Printed: Dec 20, 2010

Tous droits strictement réservés. Reproduction ou communication o des liens interdite sous quelque forme que ce soit sans autorisation écrite du propriétaire. Propriete de c FCI. Droits de reproduction FCI.

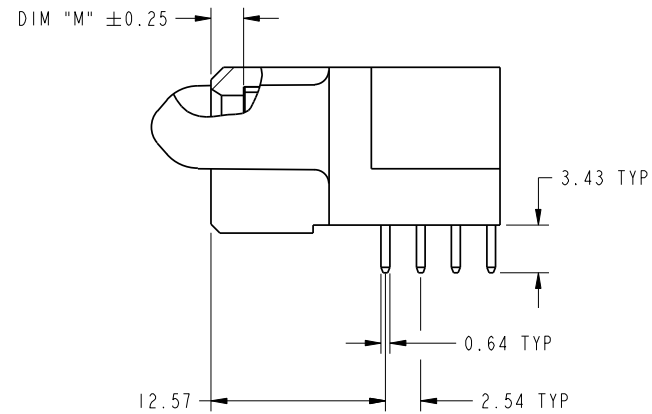
All rights strictly reserved. Reproduction or issue to third parties in any form whatever is not permitted without written authority from the proprietor. Property of FCI. Copyright FCI.



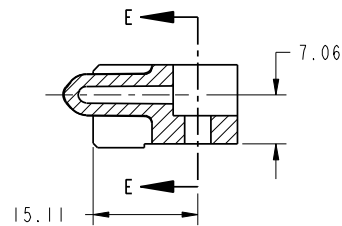
PRODUCT NUMBER  
51915-162..  
NOTE 3



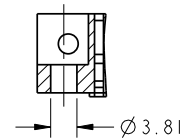
BROKEN-OUT SECTION A-A  
SCALE 2:1



BROKEN-OUT SECTION B-B  
SCALE 2:1



SECTION C-C



PARTIAL SECTION E-E

|             |                |    |      |             |                      |                                       |  |                |  |  |  |
|-------------|----------------|----|------|-------------|----------------------|---------------------------------------|--|----------------|--|--|--|
| mat'l code  |                |    |      | SEE NOTE 2  |                      | tolerances unless otherwise specified |  | CUSTOMER       |  | FCI                                      |  |
| lfr         | ecn no.        | dr | date | linear      | 0.X ± 0.5            | projection                            |  | COPY           |  | www.fciconnect.com                       |  |
| A           |                |    |      | 0.XX ± 0.25 | 0.XXX ± 0.1          | MM                                    |  | title          |  | 3ACP + 4P + 24S<br>R/A SOLDER RECEPTACLE |  |
|             |                |    |      | angles      | 0° ± 2°              | scale                                 |  | product family |  | PwrBlade                                 |  |
|             |                |    |      | dr          | Jerome Chen 05/09/08 | 1:1                                   |  | size           |  | 213                                      |  |
|             |                |    |      | engr        | Jerome Chen 05/09/08 |                                       |  | A              |  | sheet                                    |  |
|             |                |    |      | chr         | Gary Hsieh 05/09/08  |                                       |  | 51915-162      |  | 2 of 4                                   |  |
|             |                |    |      | appd        | Joseph Hsia 05/09/08 |                                       |  |                |  |  |  |
| sheet index | revision sheet |    |      |             |                      |                                       |  |                |  |  |  |

cage code 22526

Pro/E

PDM: Rev:A

STATUS: Released

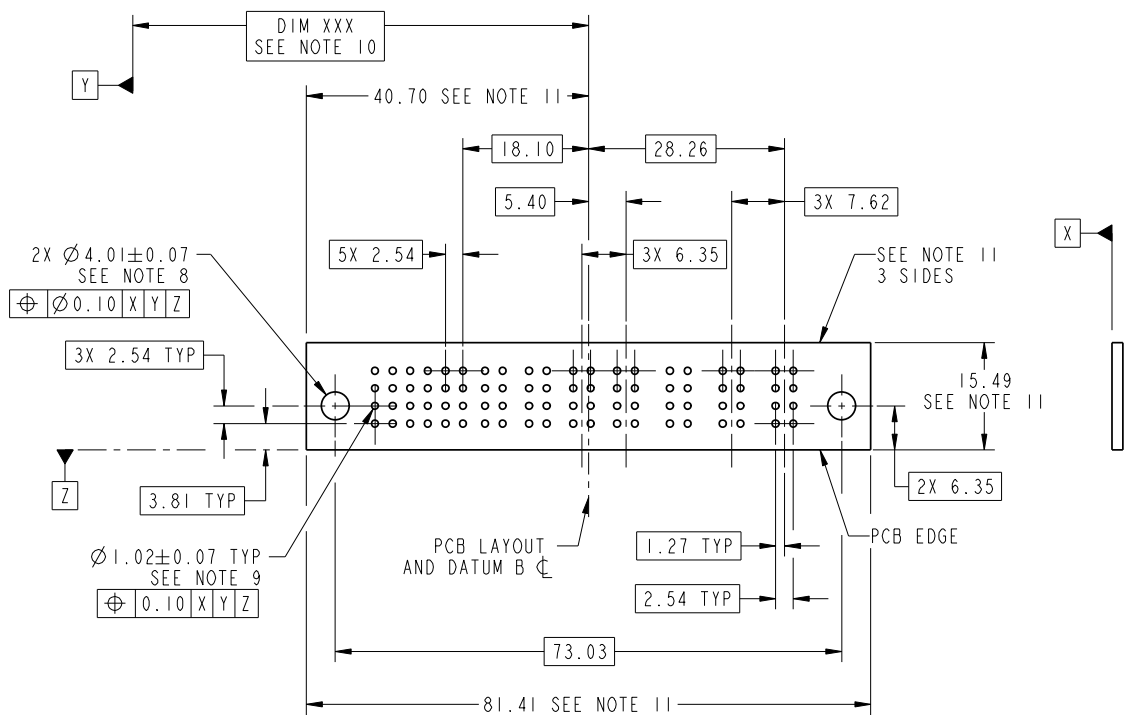
Printed: Dec 20, 2010

Tous droits strictement réservés. Reproduction ou communication o des liens interdite sous quelque forme que ce soit sans autorisation écrite du propriétaire. Propriete de c FCI. Droits de reproduction FCI.



All rights strictly reserved. Reproduction or issue to third parties in any form whatever is not permitted without written authority from the proprietor. Property of FCI. Copyright FCI.

PRODUCT NUMBER  
51915-162...  
NOTE 3



RECOMMENDED PCB LAYOUT

|             |                |          |      |                                       |                      |          |  |                |  |  |  |
|-------------|----------------|----------|------|---------------------------------------|----------------------|----------|--|----------------|--|--|--|
| mat'l code  |                | SEE NOTE |      | tolerances unless otherwise specified |                      | CUSTOMER |  | FCI            |  | www.fciconnect.com                       |  |
| lfr         | ecn no.        | dr       | date | linear                                | 0.X ± 0.5            | COPY     |  | projection     |  | title                                    |  |
| A           |                |          |      |                                       | 0.XX ± 0.25          | MM       |  | MM             |  | 3ACP + 4P + 24S<br>R/A SOLDER RECEPTACLE |  |
|             |                |          |      | angles                                | 0.XXX ± 0.1          | scale    |  | product family |  | code                                     |  |
|             |                |          |      | dr                                    | 0° ± 2°              | 1:1      |  | PwrBlade       |  | 213                                      |  |
|             |                |          |      | engr                                  | Jerome Chen 05/09/08 |          |  | size           |  | sheet                                    |  |
|             |                |          |      | chr                                   | Jerome Chen 05/09/08 |          |  | A              |  | 3 of 4                                   |  |
|             |                |          |      | appd                                  | Gary Hsieh 05/09/08  |          |  | 51915-162      |  |  |  |
|             |                |          |      |                                       | Joseph Hsia 05/09/08 |          |  |                |  |  |  |
| sheet index | revision sheet |          |      |                                       |                      |          |  |                |  |  |  |



Pro/E

cage code 22526

PDM: Rev:A

STATUS: Released

Printed: Dec 20, 2010

Tous droits strictement réservés. Reproduction ou communication o des liens interdite sous quelque forme que ce soit sans autorisation écrite du propriétaire. Propriete de c FCI. Droits de reproduction FCI.



All rights strictly reserved. Reproduction or issue to third parties in any form whatever is not permitted without written authority from the proprietor. Property of FCI. Copyright FCI.

PRODUCT NUMBER  
51915-162..  
NOTE 3

NOTES:

1. DIMENSIONS AND TOLERANCES ARE IN ACCORDANCE WITH ASME Y14.5M, 1994 UNLESS OTHERWISE SPECIFIED.

CONNECTOR NOTES:

- 2. HOUSING MATERIAL: UL 94 V-0 GLASS FILLED HIGH-TEMP THERMOPLASTIC  
POWER CONTACT MATERIAL: COPPER ALLOY  
SIGNAL PIN MATERIAL: COPPER ALLOY
- 3. PLATING:  
51915-162, 51915-162LF PLATING SPEC. WAS SHOWN IN THE PRINT OF 10064183.
- 4. MANUFACTURER'S NAME, P/N, AND DATE CODE TO APPEAR ON THIS SURFACE.
- 5. PRODUCT SPECIFICATION GS-12-149.  
APPLICATION SPECIFICATION BUS-20-067.
- 6. PACKAGED IN TRAYS.

PCB NOTES:

- 7. ALL HOLE DIAMETERS ARE FINISHED HOLE SIZE.
- 8. MOUNTING HOLES, WHERE APPLICABLE, ARE UNPLATED.
- 9.  $\varnothing 1.151 \pm 0.025$  DRILLED HOLES PLATED WITH 0.008 MIN SnPb OR Sn OVER 0.03 TO 0.08 Cu PLATING TO ACHIEVE  $\varnothing 1.02 \pm .07$  HOLE.
- 10. "DIM XXX" TO BE DETERMINED BY THE CUSTOMER.
- 11. CONNECTOR KEEP-OUT ZONE.
- 12. THE VOID CORING IN BETWEEN POWER MODULES, SIGNAL MODULES AND END MODULES ARE OPTIONAL AND THE SHAPE MAY BE DIFFERENT FOR OPTIMIZE THE MOLDING PROCESS. THE VOID CORING WILL NOT EFFECT TO PRODUCT FUNCTION.

|             |                |            |      |                                       |                      |            |       |  |           |                    |        |
|-------------|----------------|------------|------|---------------------------------------|----------------------|------------|-------|--|-----------|--------------------|--------|
| mat'l code  |                | SEE NOTE 2 |      | tolerances unless otherwise specified |                      | CUSTOMER   |       | FCI                                      |           | www.fciconnect.com |        |
| lfr         | ecn no.        | dr         | date | linear                                | 0.X ± 0.5            | COPY       |       |  |           |                    |        |
| A           |                |            |      | linear                                | 0.XX ± 0.25          | projection | title |  |           |                    |        |
|             |                |            |      | angles                                | 0.XXX ± 0.1          |            |       | 3ACP + 4P + 24S<br>R/A SOLDER RECEPTACLE |           |                    |        |
|             |                |            |      | dr                                    | 0° ± 2°              |            |       | product family                           | PwrBlade  | code               | 213    |
|             |                |            |      | engr                                  | Jerome Chen 05/09/08 | scale      | 1:1   | size                                     | dwg no    | sheet              | 4 of 4 |
|             |                |            |      | chr                                   | Gary Hsieh 05/09/08  |            |       | A  | 51915-162 |                    |        |
|             |                |            |      | appd                                  | Joseph Hsia 05/09/08 |            |       |  |           |                    |        |
| sheet index | revision sheet |            |      |                                       |                      |            |       |  |           |                    |        |

Pro/E

cage code 22526

PDM: Rev:A

STATUS: Released

Printed: Dec 20, 2010