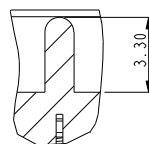
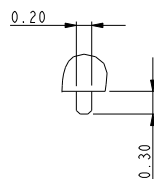
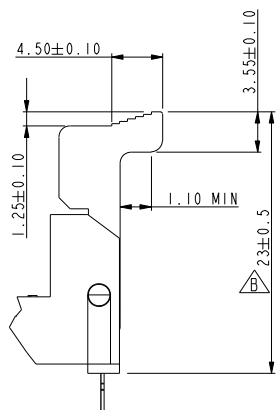
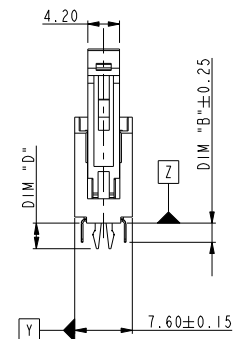
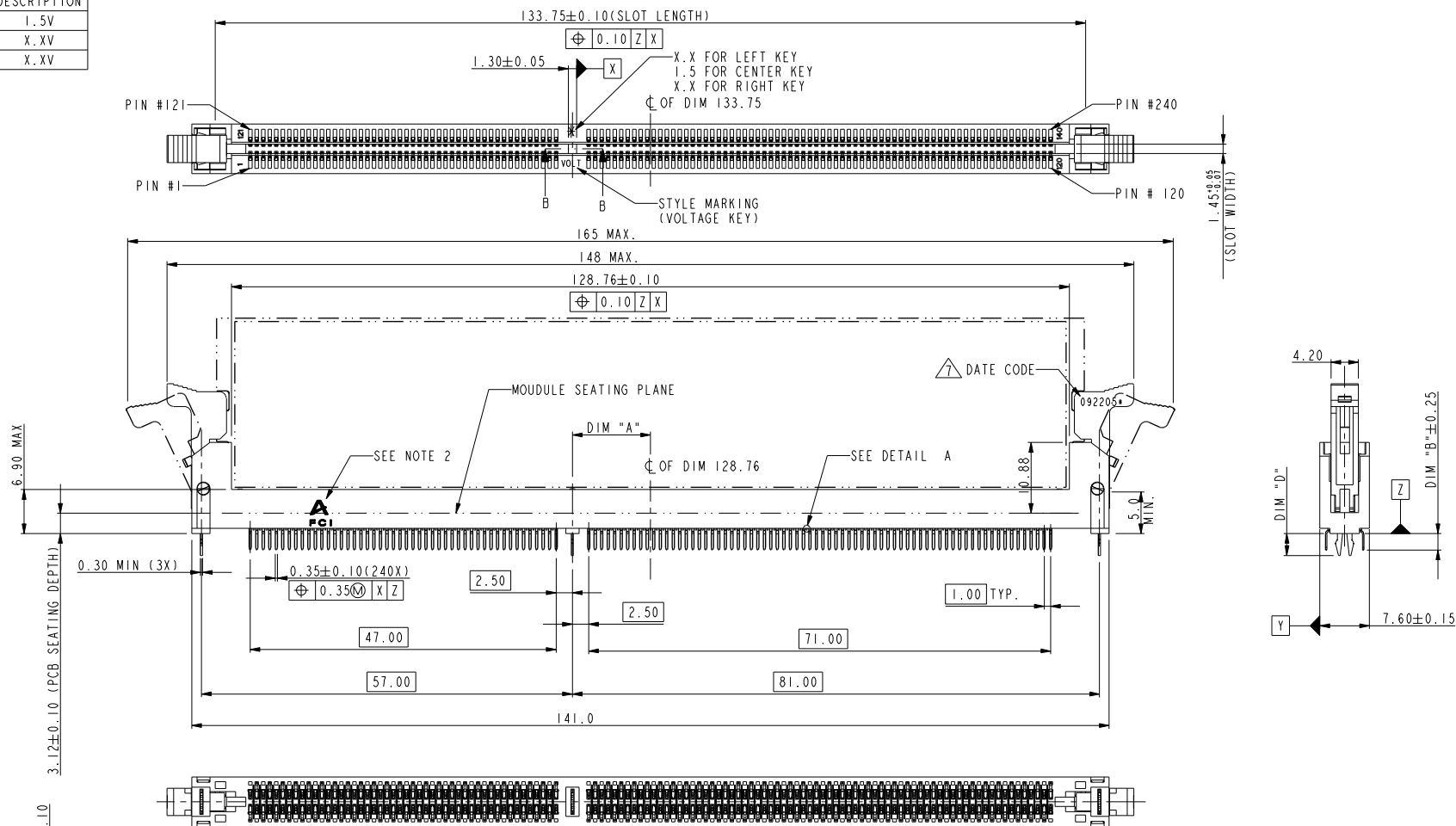

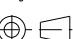




PART NO.	DIM "A"	DESCRIPTION
10081530-1****	12.00	1.5V
10081530-2****	11.00	X.XV
10081530-3****	13.00	X.XV



SECTION B-B
SCALE 3.000

rev	ecn no	dr	date
A	DG07-0401	C S	08/27/07
B	DG08-0138	B L	05/27/08
C	DG08-0172	B L	07/23/08

www.fciconnect.com			surface - 		tolerance std		projection 					
			TOLERANCES UNLESS OTHERWISE SPECIFIED									
Dr	CHARLIE S	08/27/07	ANGULAR	LINEAR	0.X	± .38	size	A4	Scale	0.500		
Eng	CAHRLIE S	08/27/07			0.XX	± .25						
Chr	GARY HSIEH	08/27/07			0.XXX	± .13						
Appr	JOSEPH HSIA	08/27/07	Product family				-	ECN DG08-0172				
								-	Spec ref *			
		title	DDR3 R-DIMM CONNECTOR METAL CLIP TYPE				dwg no	10081530		Rev	C	
		catalog no	-				CUSTOMER		sheet 1 of 4			



REFERENCE ONLY-SEE MO-269 (VARIATIONS D,E,F) FOR DETAIL

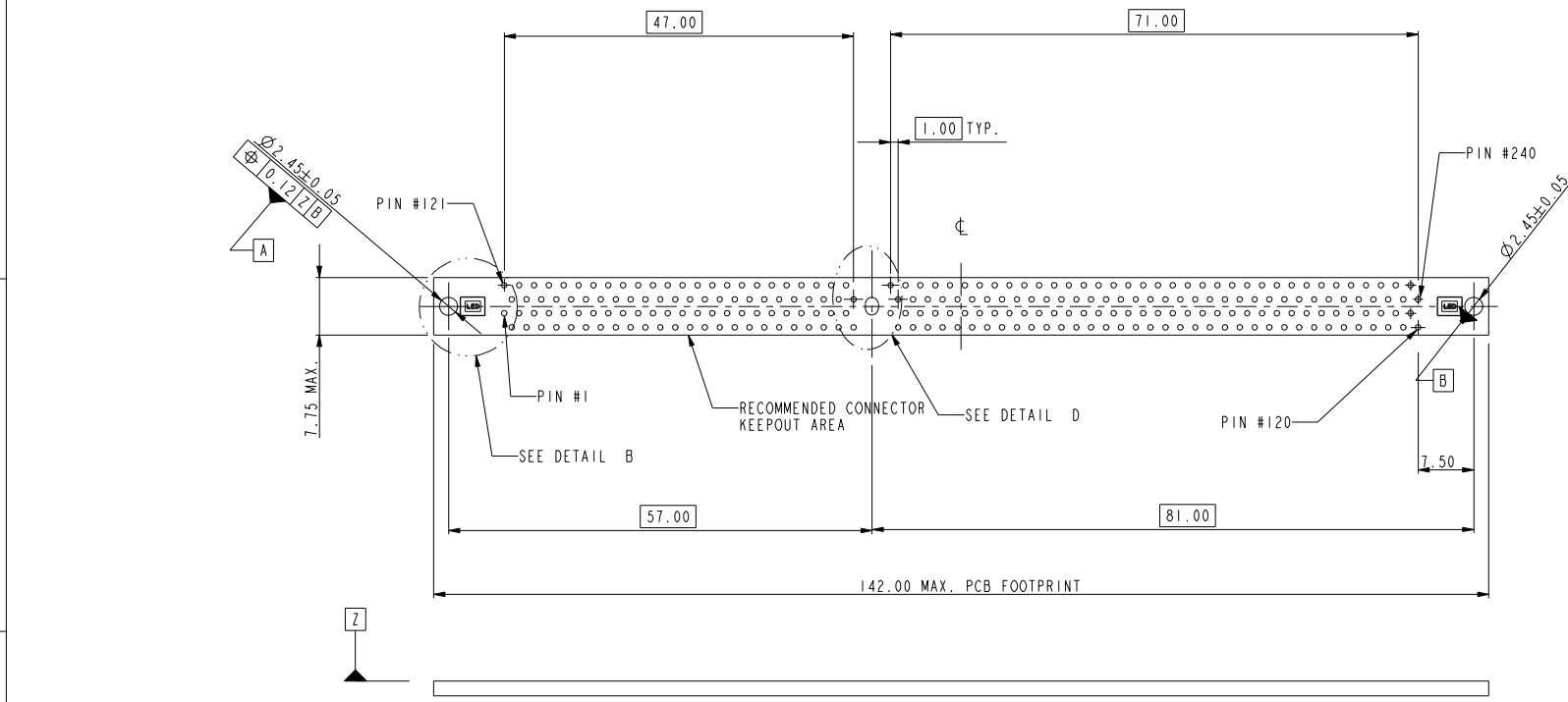


	title DDR3 R-DIMM CONNECTOR METAL CLIP TYPE	dwg no 10081530	Rev. C
	catalog no -	CUSTOMER	sheet 2 of 4

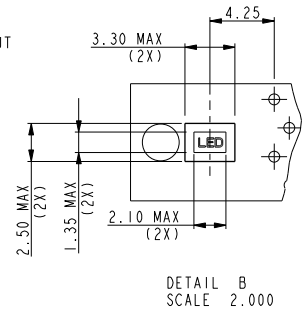
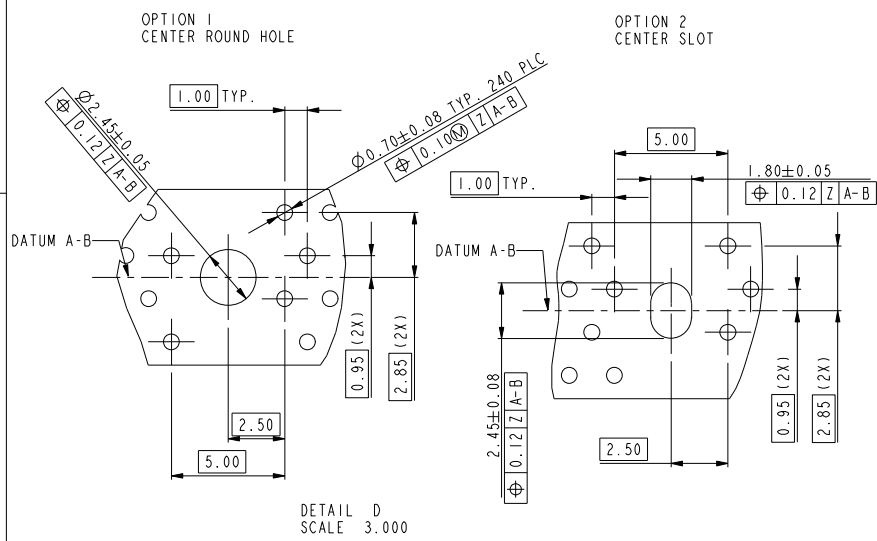


Copyright FCI.

REV F - 2006-04-17



RECOMMENDED CIRCUIT BOARD HOLE LAYOUT



tolerance unless otherwise specified	
linear	.X ± .38
	.XX ± .25
	.XXX ± .13
angles	0° ± 2°

	title		DDR3 R-DIMM CONNECTOR	dwg no	10081530		Rev. C
			METAL CLIP TYPE				
	catalog no		-				
				CUSTOMER		sheet 3 of 4	



Copyright FCI.

A

B

C

D

2

2

3

3 PDM: Rev:C

4

4 Printed: Aug 05, 2008

A

B

C

D

10081530 - □ □ □ □

STYLE : MECHANICAL KEYING

- 1 : 1.5 VOLT. W/ CENTER KEY "XB"
- 2 : X.X VOLT. W/ LEFT KEY "XA"
- 3 : X.X VOLT. W/ RIGHT KEY "XC"

CODE	METAL CLIP	TAIL LENGTH
	DIM "D"	DIM "B"
11	3.05	2.67
22	3.56	3.18

PLATING

CODE	CONTACT	SOLDERTAIL	UNDERPLATE
2	15u" (0.38um) MIN. GOLD	100u" (2.54um) MIN. TIN/LEAD	50u" (1.27um) MIN. NICKEL OVERALL
3	30u" (0.76um) MIN. GOLD		
4	GOLD FLASH	100u" (2.54um) MIN. 100% TIN	50u" (1.27um) MIN. NICKEL OVERALL
7LF	15u" (0.38um) MIN. GOLD		
8LF	30u" (0.76um) MIN. GOLD		
9LF	3u" (0.07um) MIN. GOLD		

COLOR OF HOUSING AND EJECTOR

- 0 : BLACK HOUSING + IVORY EJECTOR
- 1 : BLUE HOUSING + IVORY EJECTOR
- 2 : BLACK HOUSING + BLACK EJECTOR
- 3 : BLACK HOUSING + CLEAR EJECTOR
- 4 : BLUE HOUSING + CLEAR EJECTOR
- 5 : IVORY HOUSING + CLEAR EJECTOR
- 6 : BLACK HOUSING + BLUE EJECTOR
- 7 : IVORY HOUSING + IVORY EJECTOR
- 9 : IVORY HOUSING + BLACK EJECTOR

NOTES:

- 1. MATERIAL:
HOUSING: HIGH PERFORMANCE RESINS, GLASS FILLED UL94V-0 RATED.
EJECTOR: HIGH PERFORMANCE RESINS, GLASS FILLED UL94V-0 RATED.
TERMINAL: COPPER ALLOY.
METAL CLIP: COPPER ALLOY.
- 2. FCI LOGO TO BE APPROXIMATELY LOCATED AS SHOWN ON PRINT.
- 3. PRODUCT SPECIFICATION: GS-12-486.
- 4. PACKAGING SPECIFICATION: GS-14-899.
- 5. CARD THICKNESS APPLIES ACROSS TABS AND INCLUDES PLATING AND/OR METALIZATION.
- 6. LEADING EDGE OF CONTACT PADS SPECIFIED BY THE KEEP OUT ZONE SHALL BE FREE OF BURRS AND EXTERNAL TIE BARS. FOR OPTIMUM PERFORMANCE. THE TIE BAR IS TO BE ON AN INTERNAL LAYER SO THAT THE REMNANT CANNOT CAUSE CONTACT DAMAGE.
- 7. THE DATE CODE IS SHOWN "MMDDYY*"."*" MEANS PRODUCTION LINE CODE.
- 8. SOCKET IS COMPLIANT TO JEDEC SO-007 AND ACCEPTS JEDEC MODULE MO-269, VARIATIONS AA THRU FC.
- 9. THIS PRODUCT MEETS EUROPEAN UNION DIRECTIVES AND OTHER COUNTRY REGULATIONS AS DESCRIBED IN GS-22-008.
- 10. THE HOUSING WILL WITH STAND EXPOSURE TO 260°C PEAK TEMPERATURE FOR 10 SECONDS IN A WAVE SOLDER APPLICATION.
- 11. THE CLEAR LATCH CAN WITHSTAND MAX 174°C EXPOSURE TEMPERATURE.

tolerance unless otherwise specified	
linear	.X ± .38
	.XX ± .25
	.XXX ± .13
angles	0° ± 2°



title	DDR3 R-DIMM CONNECTOR
	METAL CLIP TYPE
catalog no	-

dwg no	10081530	Rev.
		C
CUSTOMER		sheet 4 of 4